

Bathroom & Kitchen Fittings



**CSAT
GROUP**

CONSTRUIRE &
SOIGNER
AFRIQUE
TANDIA

CONTENTS

SWING 12-15

PROFILE STAR & PROFILE 16-25

PASSION 26-31

PRIME 32-37

HARMONY 38-41

PROJECT 42-47

PEARL 48-51

POLARIS 52-59

PEAK 60-65

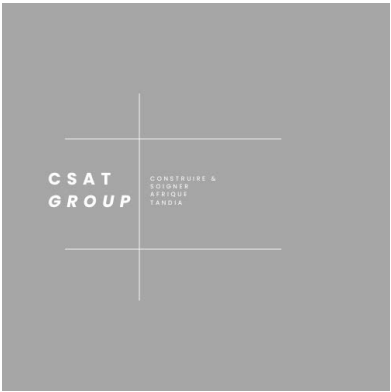
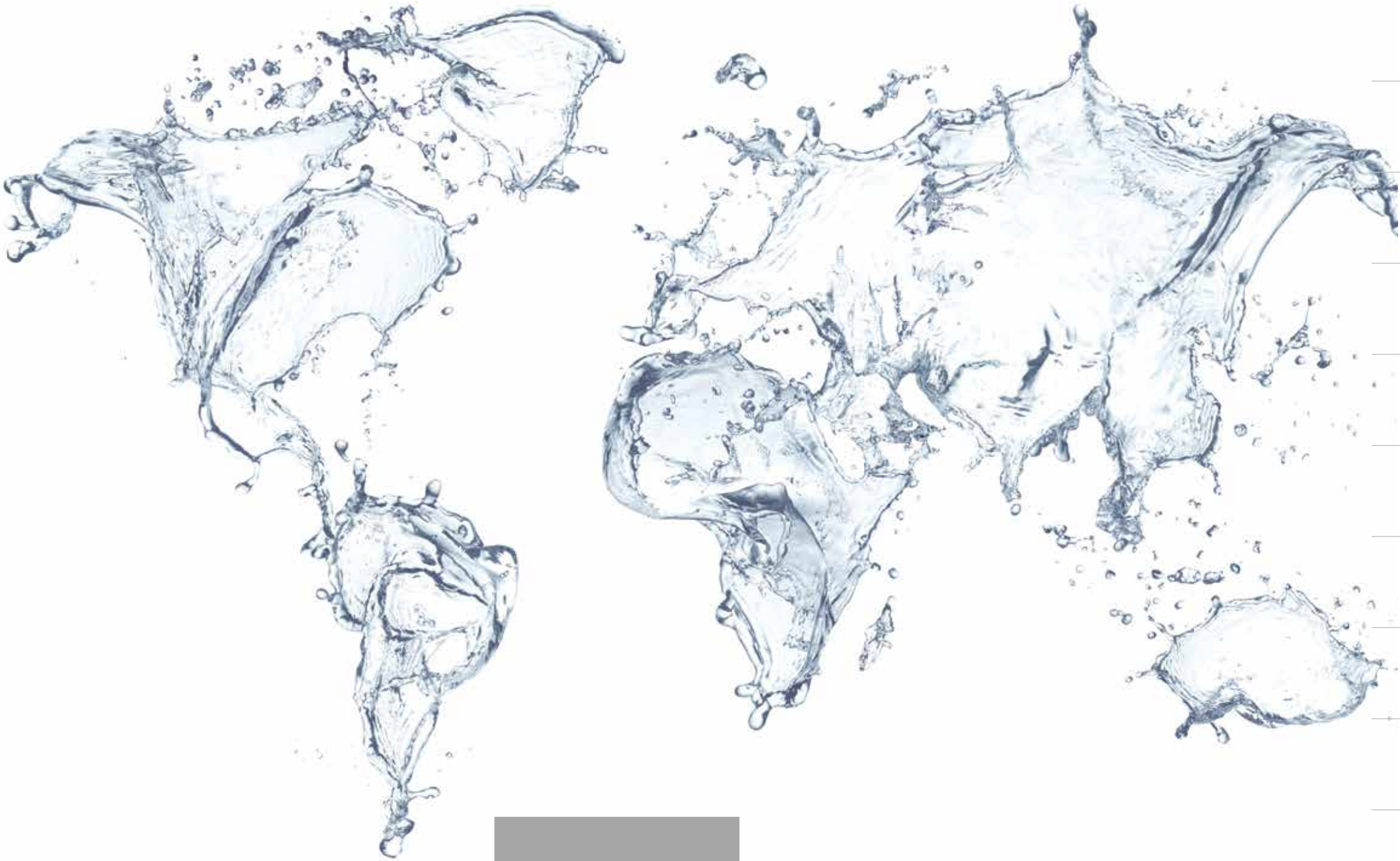
POLO 66-71

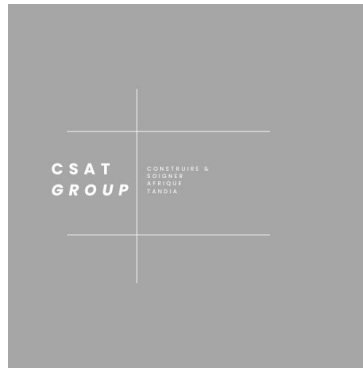
PREMIER 72-77

KITCHEN SINK 80-85

CONCEALED 86-95

SHOWERS & ACCESSORIES 96-134





CSAT GROUP is a limited liability company founded in 2007 as joint venture between the high profile German bathroom and kitchen fittings manufacturer CSAT GROUP, one of the world biggest ceramic manufacturers.

CSAT GROUP is headquartered in the Emirate of Ras Al-Khaimah and manufacturing high quality bathroom fittings with timeless and modern design.

Combined with the best German technology and quality ensuring processes, modern European machines and proven understanding of the local market, CSAT GROUP is providing long lasting bathroom fittings, which are satisfying many customers in the

Middle East, South Asia and Africa. In order to constantly guarantee the high standard of our product we use carefully selected, well established European suppliers. Additionally, every piece leaving our factory is controlled by very well trained, highly skilled and experienced employees to ensure a German quality standard.



UPHOLDING
THE HERITAGE
OF QUALITY
SINCE



1926

The humble origins of a successful business conglomerate - CSAT GROUP dates back to 1926, where the concept of quality and sustainable bath fittings for the user's comfort and convenience took shape in a production workshop in Germany. The idea evolved from KLUDI's core mission, to make every household innovative and add value to the lives of people in the community.

CSAT GROUP are the experts in bathroom and kitchen fittings and total bathroom solutions. With almost 100 years of experience in the design of fittings, the design experts blend shape and function to create a spectrum of precision-perfect products. CSAT GROUP exclusive product portfolio of fittings is unique in design and conserves water & energy. Reputed for their aesthetic styles, functionality and sustainable features, CSAT GROUP fittings continue to be a source of inspiration even today.

To cater to the quality-conscious customers in the United Arab Emirates and the Middle East and their requirements for elegant and functional quality fittings, CSAT GROUP, the world's largest ceramic manufacturer in collaboration with CSAT GROUP Germany, the world-leaders in mixers, showers and accessories established CSAT GROUP in the Emirate of Ras Al Khaimah.

Together with CSAT GROUP since 2007 extends regional expertise, skilled craftsmen, a manufacturing unit equipped with advanced European technology and backed by CSAT GROUP 9 decades of expertise in kitchen and bath fittings, CSAT GROUP has all the strengths combined to design and manufacture premium water-efficient products that are durable and consistent in quality.

CSAT GROUP fittings are the preferred product of choice for commercial, industrial, residential sectors and hospitality across UAE. Moreover are recommended by architects, interior decorators and project planners. CSAT GROUP is thus poised to offer top-notch kitchen and bathroom products to its valued customers in UAE and the Middle East.



PERFECTING PRECISION FITTINGS THROUGH TECHNOLOGY



CSAT
GROUP

CONSTRUCTION &
ENGINEERING
SOLUTIONS



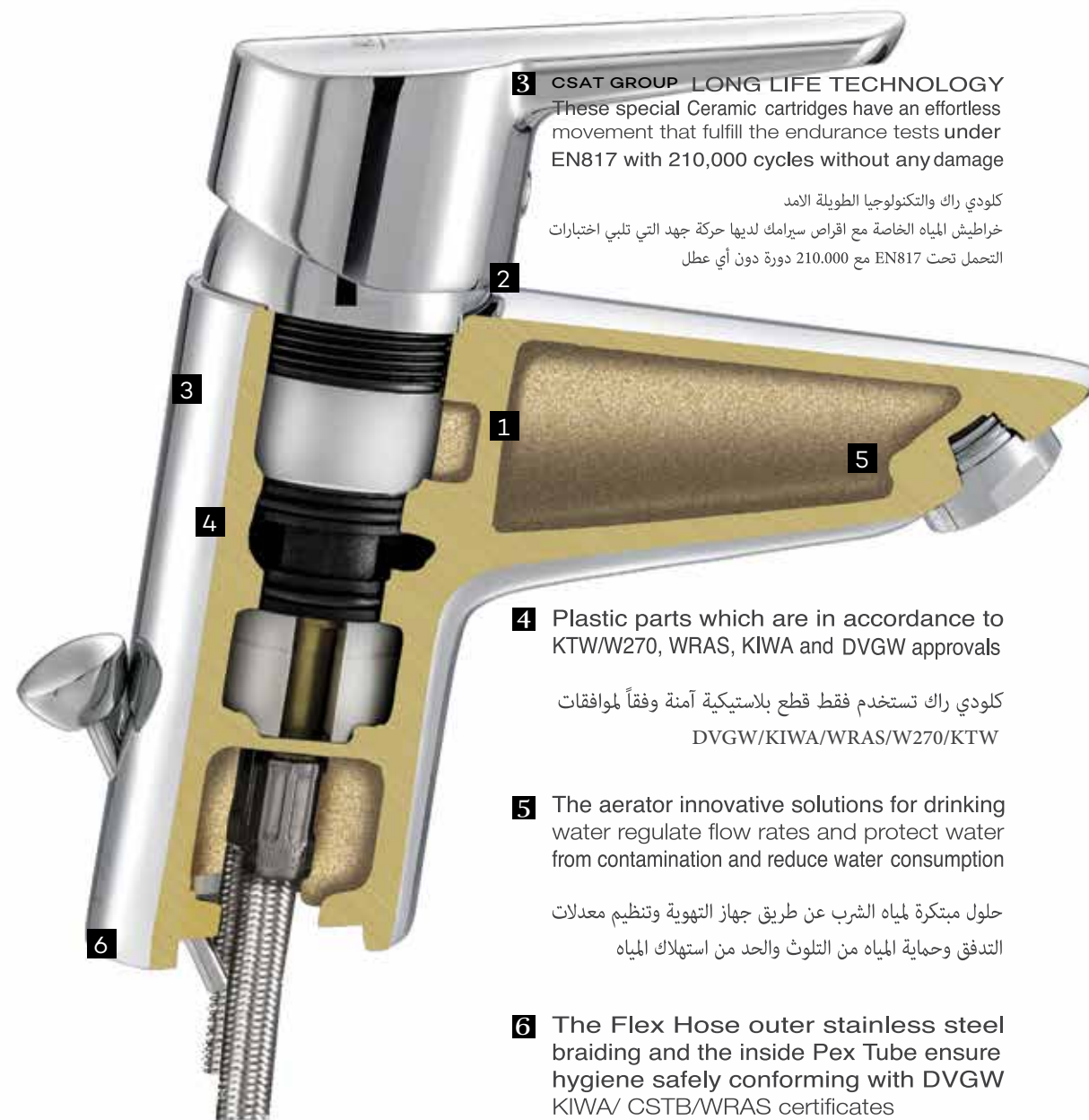
QUALITY REFLECTS IN EVERY DETAIL

- 1** CSAT GROUP uses Brass as per European Drinking water standard.

كلودي راك تستخدم نحاس تصنع الخلطات وفقاً لمعايير مياه الشرب الأوروبية

- 2** CSAT GROUP maintains a 3-layer plating thickness of Semi bright Nickel, bright Nickel and Chrome - measuring minimum 12.3 microns

كلودي راك تحافظ على ثلاث طبقات من طلاء النيكل الشبه لامع , واللامع وطبقة من الكروم بهدف الحصول على سماكة 12.3 ميكرون من الطلاء



- 3** CSAT GROUP LONG LIFE TECHNOLOGY These special Ceramic cartridges have an effortless movement that fulfill the endurance tests under EN817 with 210,000 cycles without any damage

كلودي راك والتكنولوجيا الطويلة الامد خراطيش المياه الخاصة مع اقراص سيراميك لديها حركة جهد التي تلبى اختبارات التحمل تحت EN817 مع 210.000 دورة دون أي عطل

- 4** Plastic parts which are in accordance to KTW/W270, WRAS, KIWA and DVGW approvals

كلودي راك تستخدم فقط قطع بلاستيكية آمنة وفقاً لموافقات DVGW/KIWA/WRAS/W270/KTW

- 5** The aerator innovative solutions for drinking water regulate flow rates and protect water from contamination and reduce water consumption

حلول مبتكرة لمياه الشرب عن طريق جهاز التهوية وتنظيم معدلات التدفق وحماية المياه من التلوث والحد من استهلاك المياه

- 6** The Flex Hose outer stainless steel braiding and the inside Pex Tube ensure hygiene safely conforming with DVGW KIWA/ CSTB/WRAS certificates

كلودي راك تستخدم خراطيم مياه مرنة من الستانلس استيل مقاومة للصدمات لضمان النظافة مطابقة DVGW/KIWA/CSTB/WRAS

Makers of beautifully crafted, high quality kitchen and bathroom products CSAT GROUP is a brand to reckon with. Strategically located in the Emirate of Ras Al Khaimah, CSAT GROUP upholds the brand promise by consistently delivering top-grade products to its loyal customers.

Accredited with various certifications for quality, conformity and promoting sustainability, the state-of-the-art manufacturing plant of CSAT GROUP integrates the latest European technical innovations in its development process, while adhering to sustainable practices by creating energy and water saving products, besides having superior quality raw materials procured from Europe to maintain consistency in the quality of the products at all times; Ultimately, the finest range of bathroom and products are directly supplied from the CSAT GROUP factory across GCC, the Middle East, Africa and Indian subcontinent.



WE STAND FOR WATER SAVING

Water is one of the most valuable and scarce resources that we have. At CSAT GROUP we believe in maintaining an ecological balance and hence we use only the best and highest quality water saving fittings that conserve water and energy.

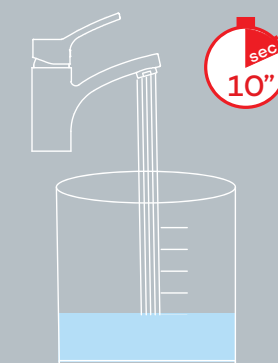


EVERYBODY EVERY DAY
IN EVERY LITTLE WAY

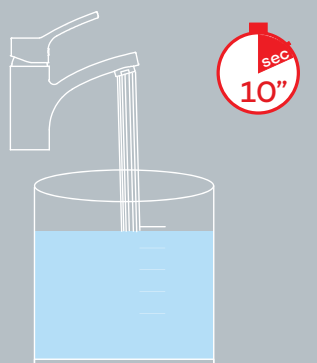
SAVE UP TO **75%** OF TAP WATER

COLLECT YOUR FREE
WATER MEASURING BAG

With Water Saving



Without Water Saving



ADDED ADVANTAGES

- Maximum lime resistance.
- Maximum lifespan.
- Perfect stream quality even under different flow conditions.
- Very low noise level.
- Damage proof: unlike Conventional wire mesh screens, it can't be crushed.
- Integrated anti clogging dome screen which filters sediments and particles.
- Constant flow rate as per requirements can be achieved irrespective of input pressure.

SWING

ERGONOMICALLY DESIGNED FOR CONVENIENCE

The Swing series is a symbolic design representing a figure that extends its two arms to embrace and contact. This dynamic and uniquely shaped series is designed for the users' convenience and comfort.

The Swing model releases water similar to a cascade effect. And is a reflection of quality, functionality & distinctiveness at its best.

 Available Finishes

GOLD



ROSE GOLD



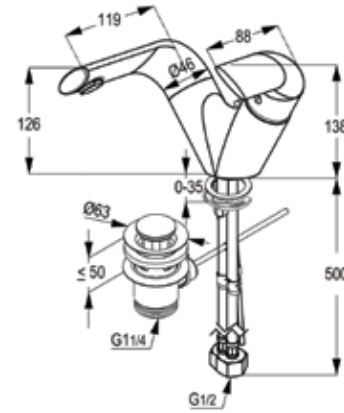
BLACK





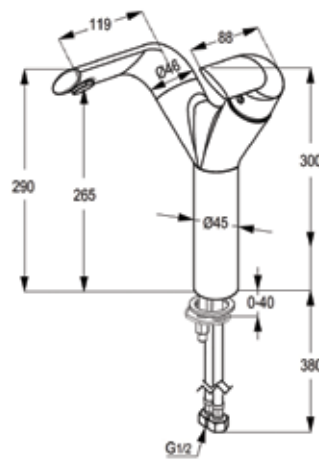
RAK16000- **

Single lever basin mixer DN 15
ceramic cartridge-K35
S-pointer PCA aerator M 24 X 1
1/2" high pressure
flexible hose with PEX tubes
pop up waste 1 1/4 inch
European standard EN 817



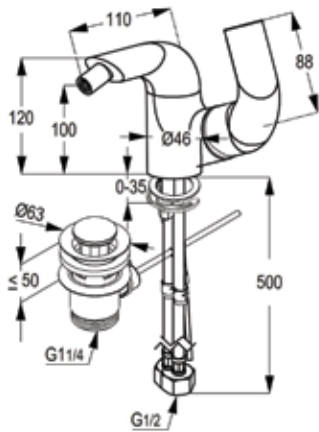
RAK16021

Single lever high raised
basin mixer DN 15
ceramic cartridge-K35
S-pointer PCA aerator M 24 X 1
1/2" high pressure flexible hose
with PEX tubes
European standard EN 817



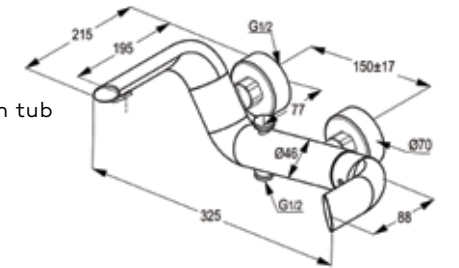
RAK16001

Single lever bidet mixer DN 15
ceramic cartridge-K35
PCA cache aerator M 16.5 X 1
1/2" high pressure
flexible hose with PEX tubes
pop up waste 1 1/4 inch
European standard EN 817



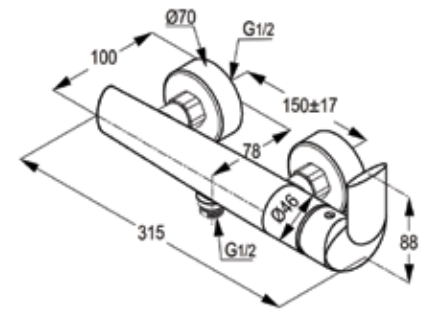
RAK16002

Single lever bath & shower mixer DN 15
without shower set
ceramic cartridge-K35
S-pointer aerator M 24 X 1
flow class CB
automatic diverter: shower to bath tub
shower outlet G 1/2"
protected against back flow
S- unions 1/2 X 3/4 inch
European standard- EN 817



RAK16003

Single lever shower mixer DN 15
ceramic cartridge-K35
flow class B
shower outlet G 1/2"
protected against back flow
S- unions 1/2 X 3/4 inch
European standard- EN 817



RAK16075

Concealed single lever Bath &
Shower Mixer trim set

RAK38636

Pre-installation kit DN 15



RAK16079

Concealed single lever shower
mixer trim set

RAK38828

Pre-installation kit DN 15



PROFILE STAR

PICTURE PERFECT MATCH FOR THE DISCERNING

The CSAT GROUP Profile Star collection showcases well-defined perfect bath fittings that match the taste of every discerning customer. Geometric contours and accented facets are the primary inspirational elements featured in the Profile Star series. Ergonomically designed with excellent quality craftsmanship, the handle of the faucet reflect a cubic shape with rounded edges lent it a unique visual appeal.

The Profile Star collection is a perfect match for your choice of style and convenience.

    Available Finishes

GOLD



ROSE GOLD

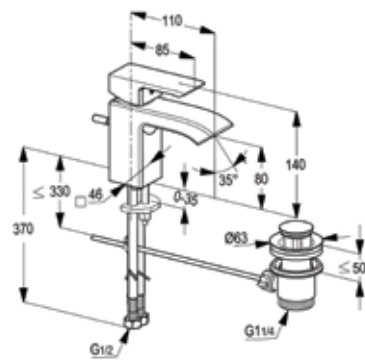


BLACK

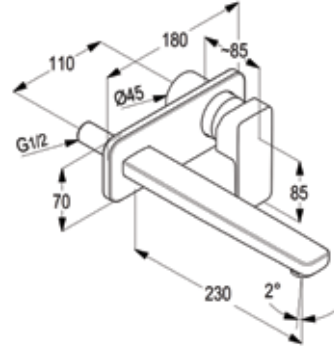




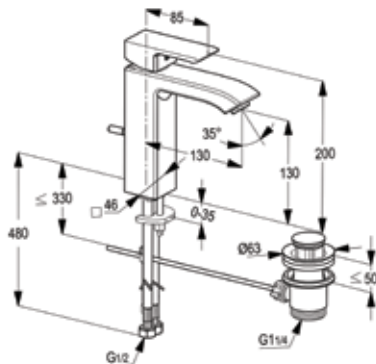
RAK14100
Single lever basin mixer DN 15
ceramic cartridge-K35
cache aerator M 24 x 1
1/2" high pressure flexible hose
with PEX tubes
pop up waste 1 1/4 inch
European standard - EN 817



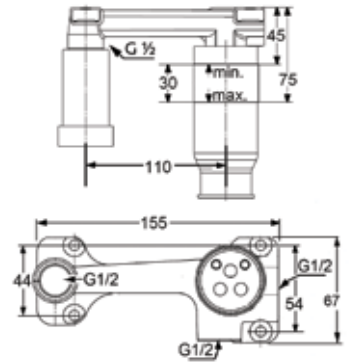
RAK14124
Concealed 2-hole single
lever basin mixer
trim set aerator M 24 x 1
flow class Z
wall outlet 230 mm
without pre-installation
kit item no. RAK38243



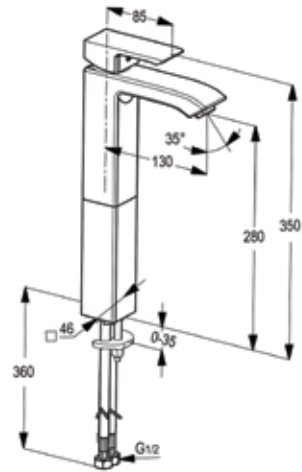
RAK14160
Single lever basin mixer XL DN 15
ceramic cartridge - K35
aerator M 24 x 1
1/2" high pressure flexible hose
with PEX tubes
pop up waste 1 1/4 inch
European Standard - EN 817



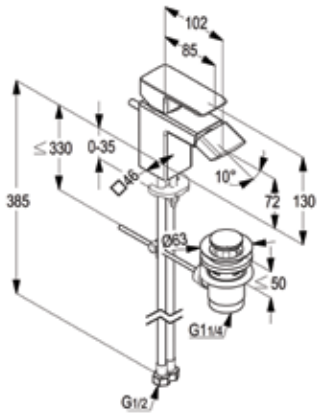
RAK38243
Pre installation kit DN 15



RAK14161
Single lever basin mixer XL HR DN 15
ceramic cartridge-K35
aerator M 24 x 1
1/2" high pressure flexible hose with PEX
tubes European standard - EN 817



RAK14101
Single lever bidet mixer DN 15
ceramic cartridge-K35
ball joint cache aerator M 18.5 x 1
1/2" high pressure flexible hose
with PEX tubes
pop up waste 1 1/4 inch
European Standard - EN 817



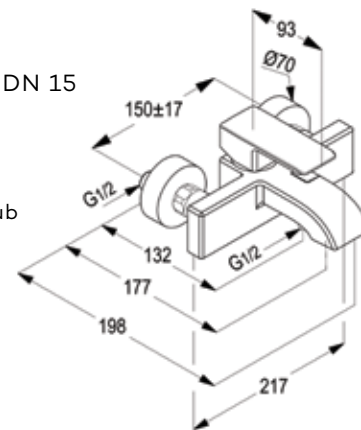


RAK14102

Single lever bath & shower mixer DN 15
without shower set
ceramic cartridge-K41
S-pointer aerator M 24 X 1
flow class CB
automatic diverter: shower to bath tub
shower outlet G 1/2"
protected against back flow
S- unions 1/2 X 3/4 inch
European standard- EN 817



Available Finishes

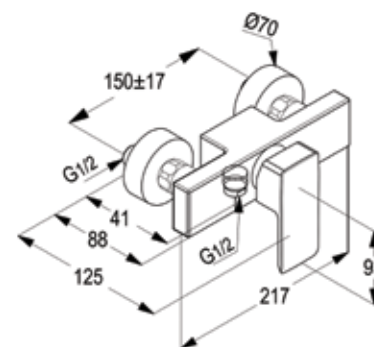


RAK14105

Single lever shower mixer DN 15
ceramic cartridge-K41
flow class B
shower outlet G 1/2"
protected against back flow
S- unions 1/2 X 3/4 inch
European standard- EN 817



Available Finishes

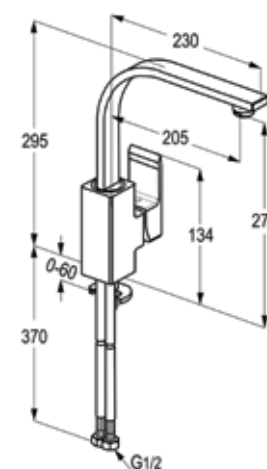


RAK14114

Single lever sink mixer DN 15
Ceramic cartridge with hot water
safety device Ø35 mm
swivelling (360°) rectangular
spout l = 230 mm
PCA aerator M 24 x 1
flexible high pressure supply
tubes 1/2 inch
European standard- EN 817



Available Finishes



RAK14175

Concealed single-lever bath &
shower mixer trim set

RAK38636

Pre-installation kit DN 15



Available Finishes



RAK14179

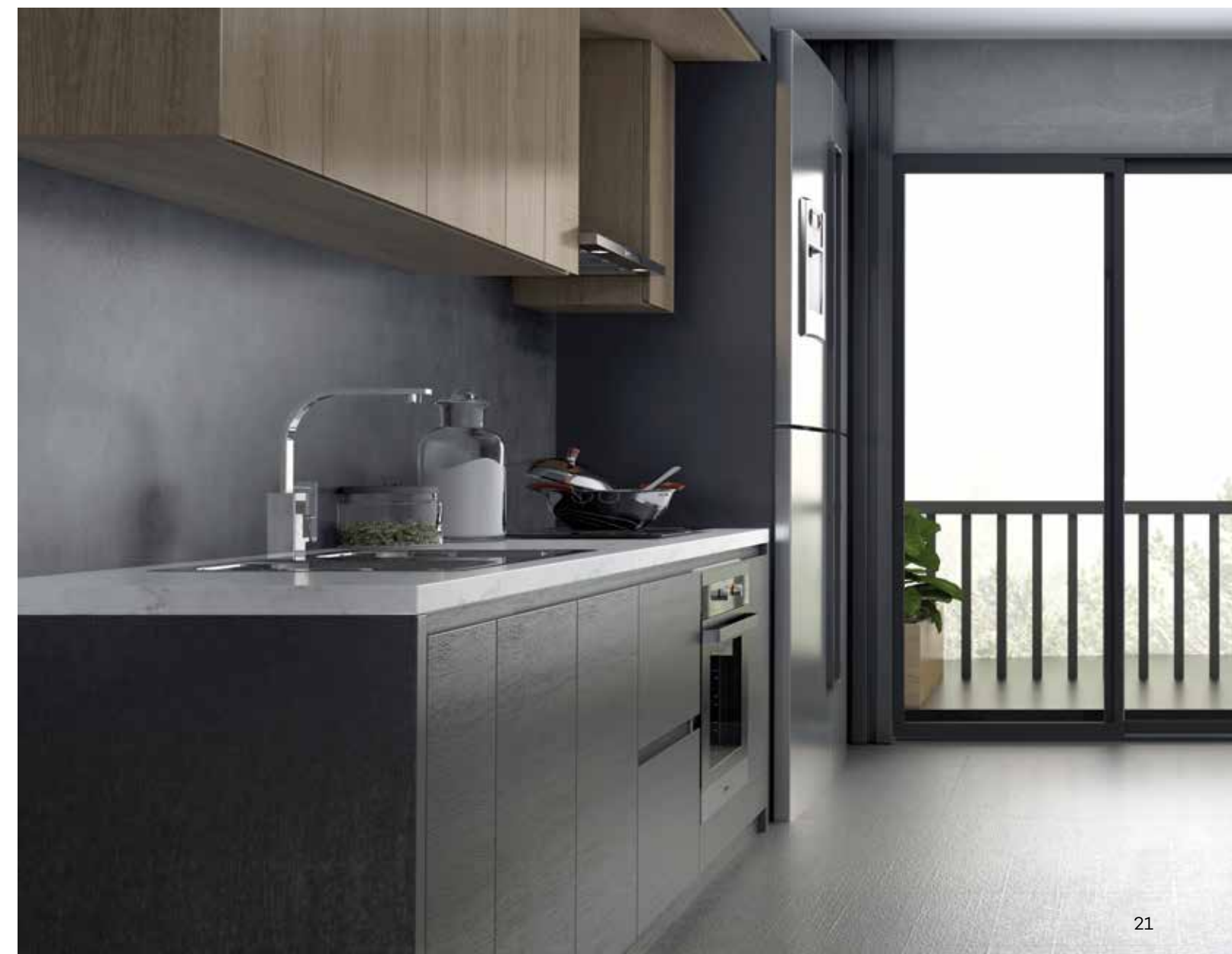
Concealed single-lever shower
mixer trim set

RAK38828

Pre-installation kit DN 15



Available Finishes



PROFILE

PICTURE PERFECT MATCH FOR THE DISCERNING

The Profile collection is a perfect match for your choice of style and convenience.

The CSAT GROUP Profile collection showcases well-defined perfect bath fittings that match the taste of every discerning customer. Geometric contours and accented facets are the primary inspirational elements featured in the Profile series. Ergonomically designed with excellent quality craftsmanship, the handle of the faucet reflect a cubic shape with rounded edges lent it a unique visual appeal.

 Available Finishes

GOLD



ROSE GOLD



BLACK



PASSION

CLASSIC STYLE WITH ENHANCED FLEXIBILITY

A flawless synergy of geometric shapes that blends with all bathroom styles, mixers from the Passion is designed to offer maximum flexibility. The shower fittings have a sleek and flat hand-held shower that releases gentle & steady flow of water similar to the falling rain. Furthermore showering becomes an invigorating experience. The Kitchen mixer comes with a spout that can revolve 360 degrees, creating ample space within the sink.

 Available Finishes

GOLD



ROSE GOLD



BLACK

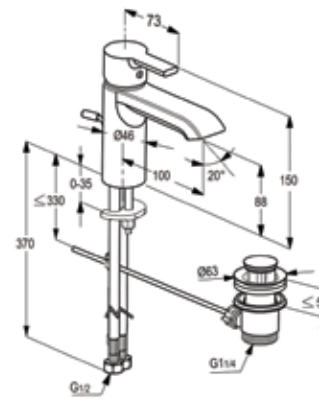




RAK13000

Single Lever Basin Mixer DN 15
ceramic cartridge-K35
cache aerator M 24 x 1
1/2" high pressure flexible hose
with PEX tubes
pop up waste 1 1/4 inch
European Standard - EN 817

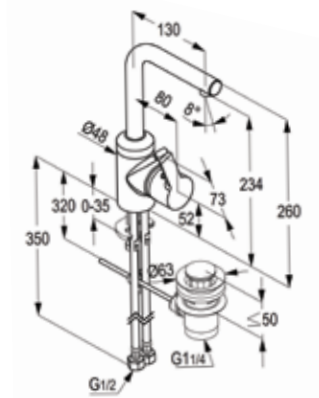
 Available Finishes



RAK13028

Side Single Lever Basin Mixer DN 15
ceramic cartridge-K35
swivelling spout-(360°)
PCA cache aerator M 16.5 x 1
1/2" high pressure flexible hose with PEX
tubes
pop up waste 1 1/4 inch
European Standard - EN 817

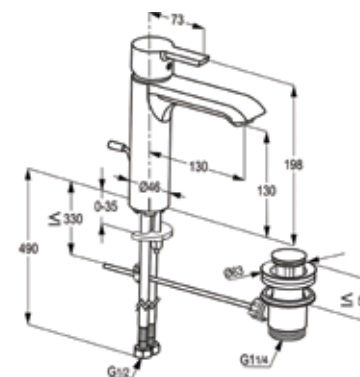
 Available Finishes



RAK13060

Single lever basin mixer XL DN 15
ceramic cartridge - K35
aerator M 24 x 1
1/2" high pressure flexible
hose with PEX tubes
pop up waste 1 1/4 inch
European Standard - EN 817

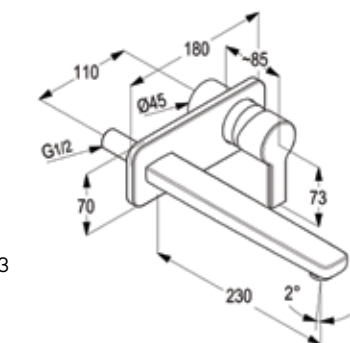
 Available Finishes



RAK 13024

Concealed 2-hole single lever
basin mixertrim set
aerator M 24 x 1
flow class Z
wall outlet 230 mm
without pre-installation kit item no. RAK38243

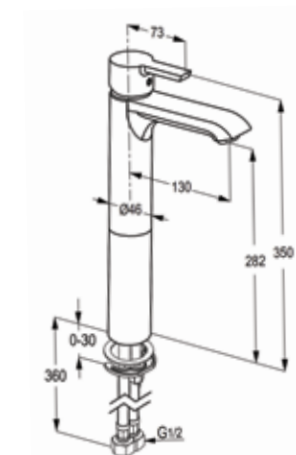
 Available Finishes



RAK13061

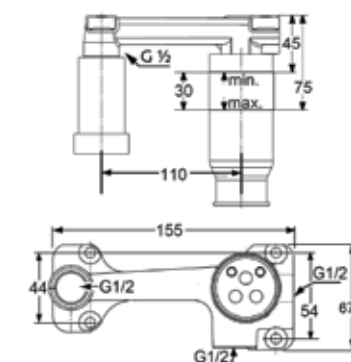
single lever basin mixer XL HR DN 15
ceramic cartridge-K35
aerator M 24 x 1
1/2" high pressure flexible
hose with PEX tubes
European standard - EN 817

 Available Finishes



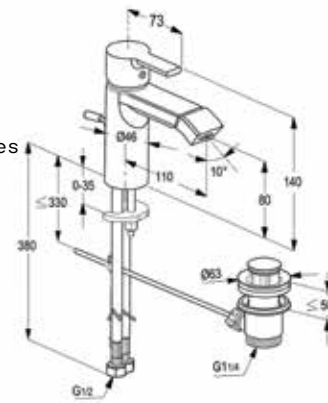
RAK38243

Pre installation kit DN 15

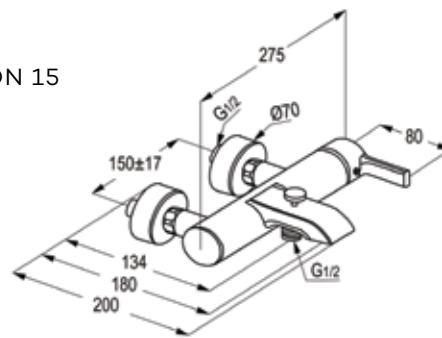


**RAK13001**

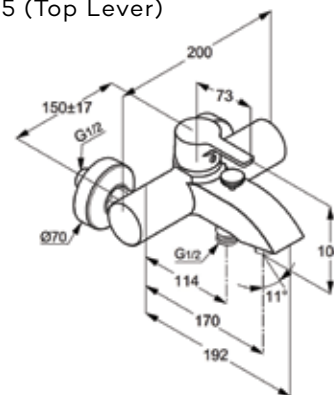
Single lever bidet mixer DN 15
ceramic cartridge-K35
ball joint cache aerator M 18.5 x 1
1/2" high pressure flexible hose with PEX tubes
pop up waste 1 1/4 inch
European Standard - EN 817

**RAK13002**

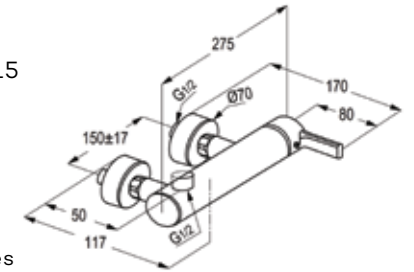
Single lever bath & shower mixer DN 15
without shower set
ceramic cartridge-K41
aerator M 24 X 1
flow class CB
automatic diverter: shower to bath tub
shower outlet G 1/2"
protected against back flow
S- unions 1/2 X 3/4 inch
European standard- EN 817

**RAK13102**

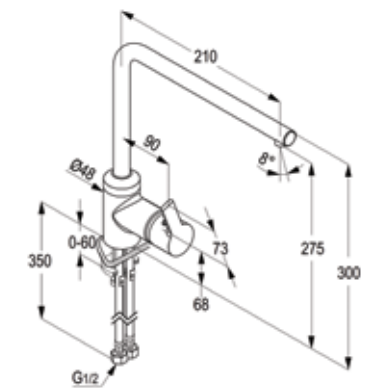
Single lever bath & shower mixer DN 15 (Top Lever)
without shower set
ceramic cartridge-K35
aerator M 24 X 1
flow class CB
automatic diverter: shower to bath tub
shower outlet G 1/2"
protected against back flow
S- unions 1/2 X 3/4 inch
European standard- EN 817

**RAK13005**

Single lever shower mixer DN 15
ceramic cartridge-K41
Flow class B
shower outlet G 1/2"
protected against back flow
S- unions 1/2 X 3/4 inch

**RAK13012**

Single lever sink mixer DN 15
ceramic cartridge-K35
swivelling (360°) spout l = 210 mm
PCA cache aerator M 16,5 x 1
1/2" high pressure flexible hose
with PEX tubes
European Standard- EN 817



RAK13075

Concealed single-lever bath & shower mixer trim set

RAK38636
Pre-installation kit DN 15



RAK13079

Concealed single-lever shower
mixer trim set

RAK38828
Pre-installation kit DN 15



PRIME

VERSATILITY WITH A CLASSY TOUCH

Clear-cut flowing lines, a curved flexible spout and single lever mixer fitted with a minimalist handle are the highlights of the Prime Series.

Prime collection comprises of a vast range of products, particularly meant for the shower. Prime Series is thus the preferred choice for all architectural projects.

 Available Finishes

GOLD



ROSE GOLD



BLACK

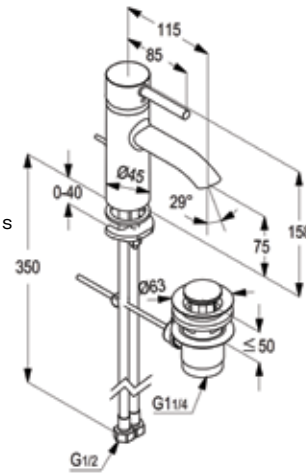




RAK12000

Single lever basin mixer DN 15
ceramic cartridge-K35
cache aerator M 16.5 x 1
1/2" high pressure flexible hose with PEX tubes
pop up waste 1 1/4 inch
European Standard - EN 817

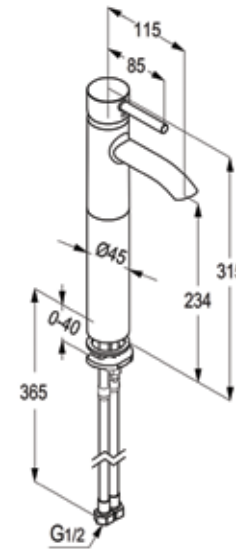
 Available Finishes



RAK12001

Single lever high raised basin mixer DN 15
ceramic cartridge-K35
cache aerator M 16.5 x 1
1/2" high pressure flexible hose with PEX tubes
European Standard - EN 817

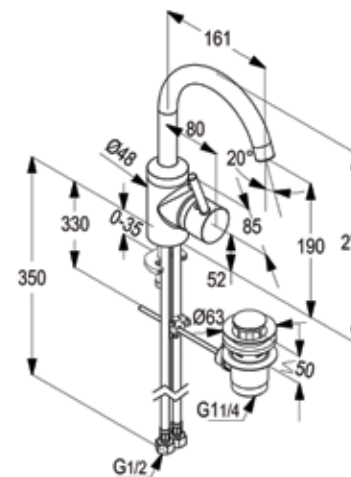
 Available Finishes



RAK12028

Side Single lever basin mixer DN 15
ceramic cartridge-K35
with swivelling spout
cache aerator M 16.5 x 1
1/2" high pressure flexible hose
with PEX tubes
pop up waste 1 1/4
European standard- EN 817

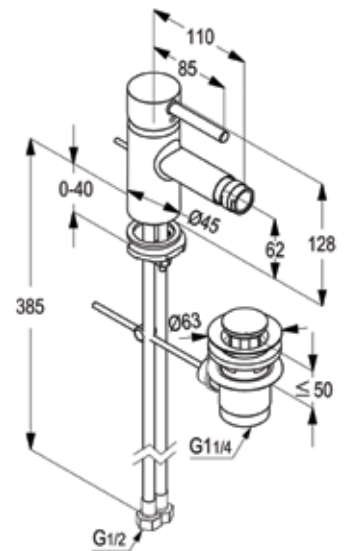
 Available Finishes



RAK12003

Single lever bidet mixer DN 15
ceramic cartridge-K35
ball joint aerator M 24 x 1
1/2" high pressure flexible hose with PEX
tubes
pop up waste 1 1/4 inch
European Standard - EN 817

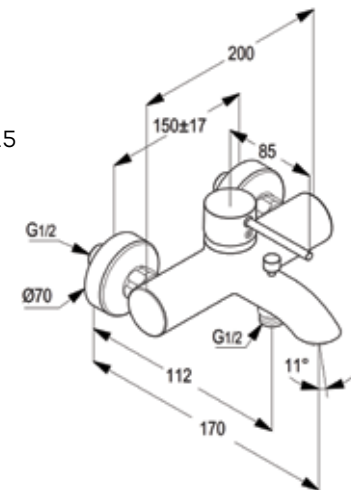
 Available Finishes



RAK12004

Single lever bath & shower mixer DN 15
without shower set
ceramic cartridge-K35
aerator M 24 X 1
flow class CB
automatic diverter: shower to bath tub
shower outlet G 1/2"
protected against back flow
S- unions 1/2 X 3/4 inch
European standard- EN 817

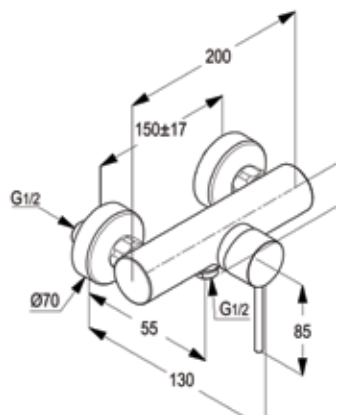
 Available Finishes



RAK12008

Single lever shower mixer DN 15
ceramic cartridge-K35
flow class B
shower outlet G 1/2"
protected against back flow
S- unions 1/2 X 3/4 inch
European standard- EN 817

 Available Finishes

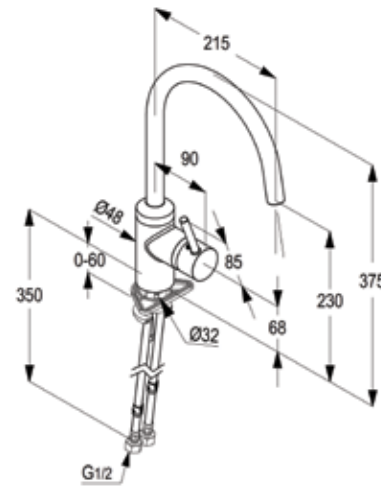




RAK12012

Single lever sink mixer DN 15
ceramic cartridge-K35
swivelling (360°) spout l=215 mm
PCA cache aerator M16.5X1
1/2" high pressure flexible hose
with PEX tubes
European Standard - EN 817

 Available Finishes



RAK12075

Concealed single-lever bath &
shower mixer trim set

RAK38636
Pre-installation kit DN 15

 Available Finishes



RAK12079

Concealed single-lever shower
mixer trim set

RAK38828
Pre-installation kit DN 15

 Available Finishes





HARMONY

DYNAMIC SYMPHONY OF FORM & FUNCTIONALITY

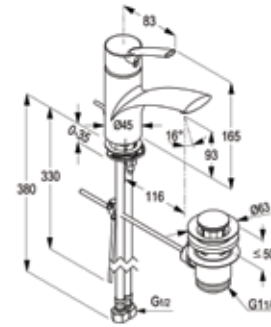
Contemporary style combined with functionality is what makes the Harmony mixers really unique. The exceptional features of the Harmony series include swivel cascade aerators that offer highly flexible solutions for both bath and kitchen. With Harmony in your homes, comfort and convenience is guaranteed.



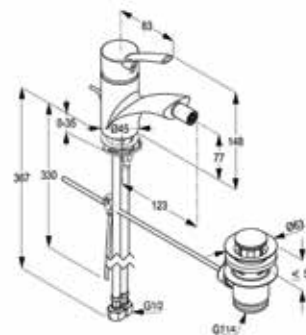


RAK15000

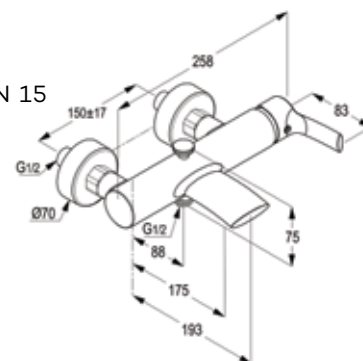
Single lever basin mixer DN 15
ceramic cartridge-K35
aerator M 24 x 1
1/2" high pressure flexible hose
with PEX tubes
pop up waste 1 1/4 inch
European Standard - EN 817

**RAK15001**

Single lever bidet mixer DN 15
ceramic cartridge-K35
cache aerator M 16,5 x 1
1/2" high pressure flexible hose
with PEX tubes
pop up waste 1 1/4 inch
European Standard - EN 817

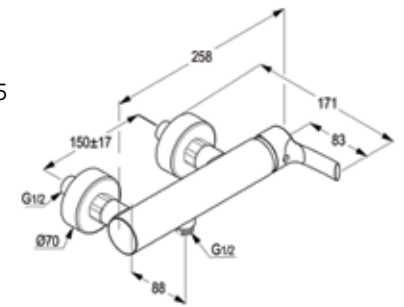
**RAK15002**

Single lever bath & shower mixer DN 15
without shower set
ceramic cartridge-K35
flow straightener M 24 X 1
flow class - CB
automatic diverter: shower to bath tub
shower outlet G 1/2"
protected against back flow
S- unions 1/2 X 3/4 inch
European standard- EN 817



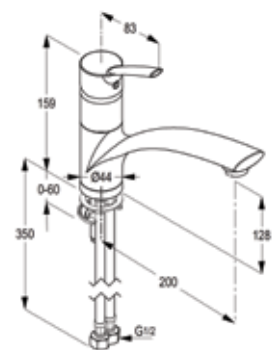
RAK15003

Single lever shower mixer DN 15
ceramic cartridge-K35
flow class B
shower outlet G 1/2"
protected against back flow
S- unions 1/2 X 3/4 inch
European standard- EN 817



RAK15004

Single lever sink mixer DN 15
ceramic cartridge-K35
aerator M 24 x 1
swivelling (360°) spout l = 200 mm
1/2 " high pressure flexible hose
with PEX tubes
European standard EN 817

**RAK15075**

Concealed single-lever bath & shower mixer trim set

RAK38636
Pre-installation kit DN 15

**RAK15079**

Concealed single-lever shower
mixer trim set

RAK38828
Pre-installation kit DN 15



PROJECT

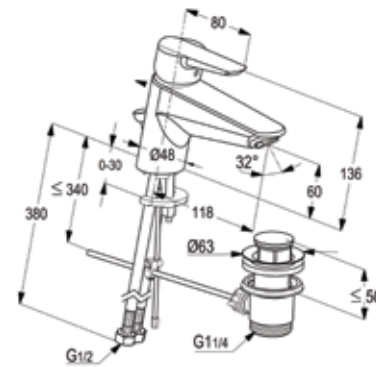
SOPHISTICATED CRAFTSMANSHIP WITH QUALITY FINISH

The Project range is characterised by smooth flowing contours with rounded edges that makes it compatible with all bathroom styles. These mixers sport superior grade chrome surface and are made of excellent quality ceramic cartridge that guarantees durability and functionality.

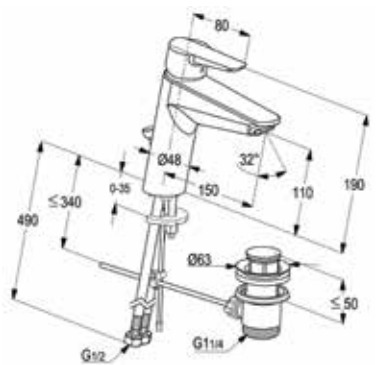
For discerning customers who seek top-grade fittings at an affordable cost, the Project collection of mixers fits the bill perfectly.

**RAK11000**

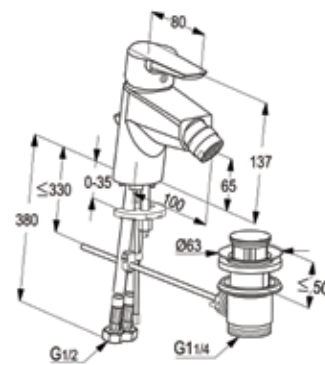
Single lever basin mixer DN 15
ceramic cartridge K-35
aerator M 24 x 1
1/2" high pressure flexible hose
with PEX tubes
pop up waste 1 1/4 inch
European Standard - EN 817

**RAK11060**

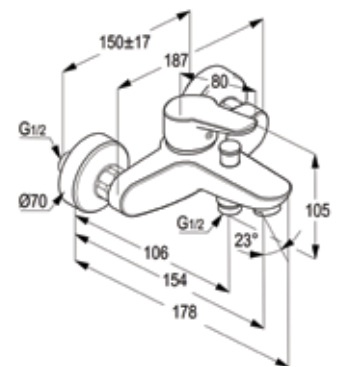
Single lever basin mixer XL DN 15
ceramic cartridge - K35
aerator M 24 x 1
1/2" high pressure flexible hose
with PEX tubes
pop up waste 1 1/4 inch
European Standard - EN 817

**RAK11001**

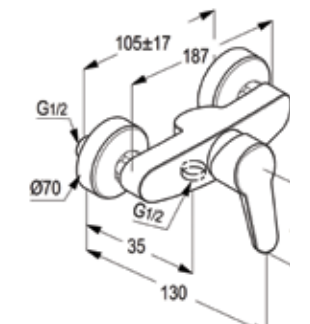
Single lever bidet mixer DN 15
ceramic cartridge-K35
ball joint aerator M 24 x 1
1/2" high pressure flexible hose
with PEX tubes
pop up waste 1 1/4 inch
European Standard - to EN 817

**RAK11002**

Single lever bath & shower mixer DN 15
without shower set
ceramic cartridge-K35
aerator M 24 X 1
flow class CB
automatic diverter: shower to bath tub
shower outlet G 1/2"
protected against back flow
S- unions 1/2 X 3/4 inch
European standard- EN 817

**RAK11005**

Single lever shower mixer DN 15
ceramic cartridge-K35
flow class B
shower outlet G 1/2"
protected against back flow
S- unions 1/2 X 3/4 inch
European standard- EN 817

**RAK11075**

Concealed single-lever bath &
shower mixer trim set

RAK38636
Pre-installation kit DN 15

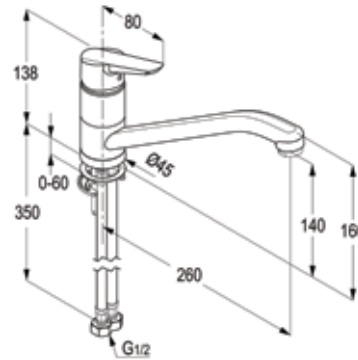
RAK11079

Concealed single-lever shower
mixer trim set

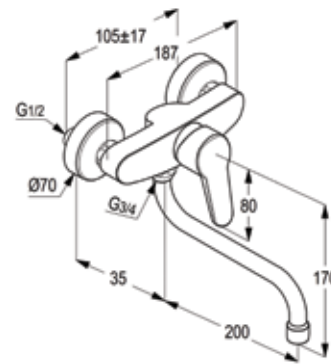
RAK38828
Pre-installation kit DN 15

**RAK11010**

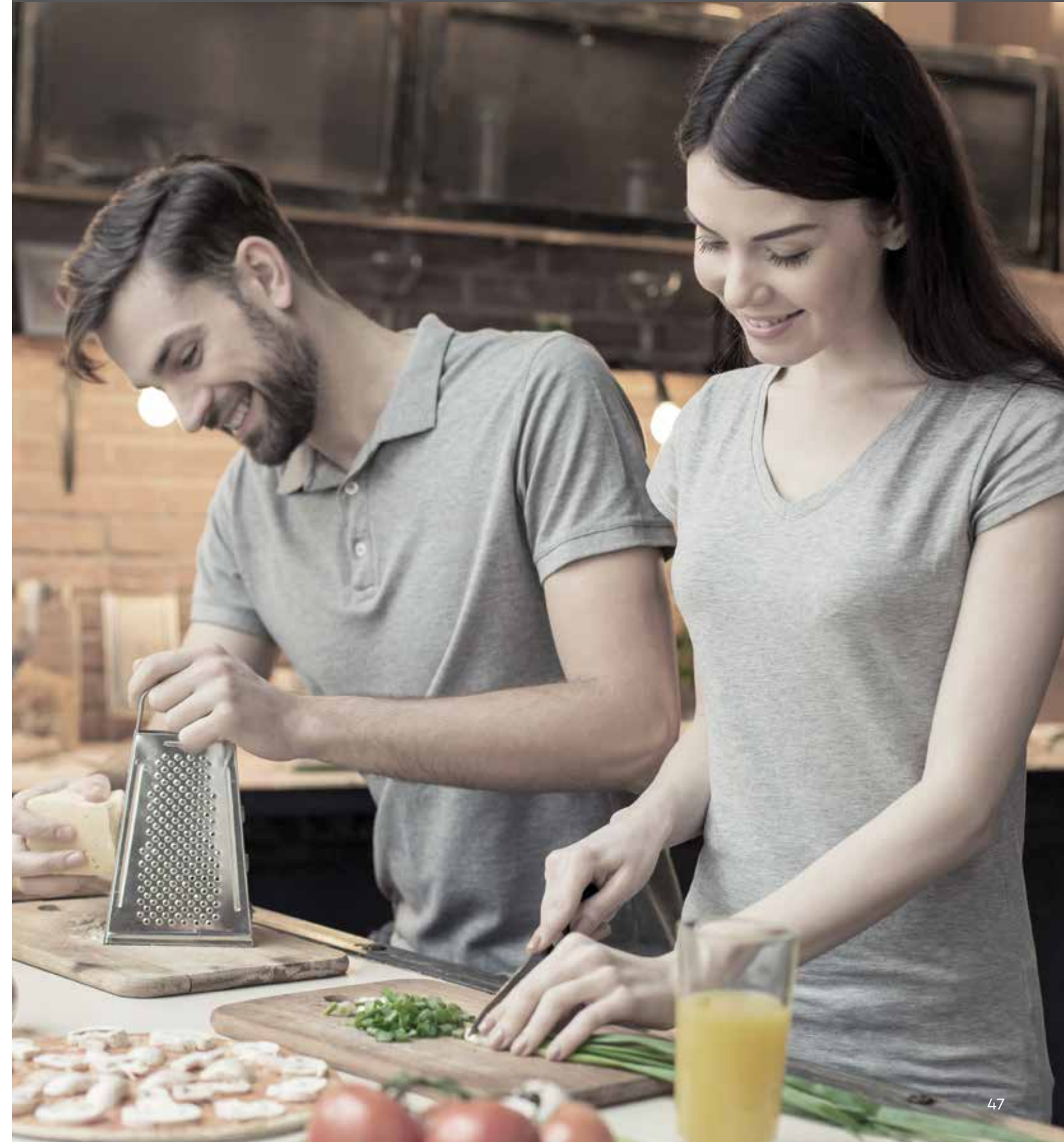
Single lever sink mixer DN 15
ceramic cartridge-K35
swivelling (360°) spout l = 260 mm
aerator M 24 x 1
1/2" high pressure flexible hose
with PEX tubes
European Standard - EN 817

**RAK11009**

Wall mounted single lever
sink mixer DN 15
ceramic cartridge-K35
swivelling (185°) spout l = 200 mm
aerator M 22 x 1
flow class A
S- unions 1/2 X 3/4 inch
European standard- EN 817



SOPHISTICATED CRAFTSMANSHIP WITH QUALITY FINISH



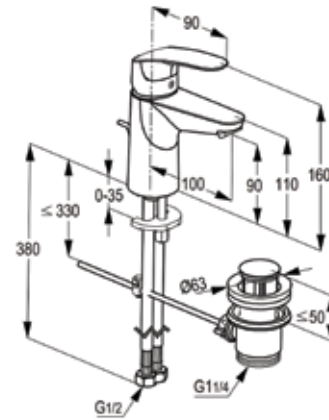


PEARL

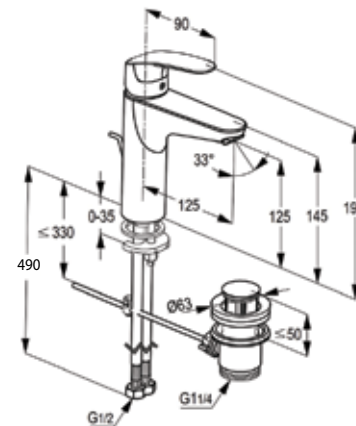
Extravagant and yet natural at the same time - that is the beauty of Pearl. These highly contemporary fittings provide a winning combination of innovative technology and cascade aerator. The cascade aerator in both basin and bath resembles the natural flow of water in the wild.

**RAK17000**

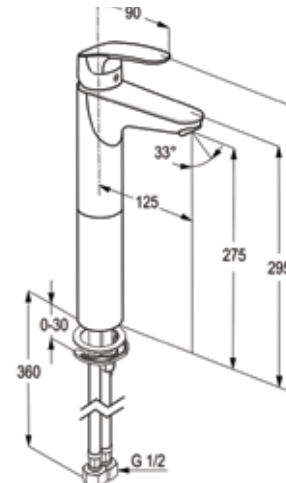
Single lever basin mixer DN 15
ceramic cartridge - K35
aerator M 24 x 1
1/2" high pressure flexible hose
with PEX tubes
pop up waste 1 1/4 inch
European Standard- EN 817

**RAK17060**

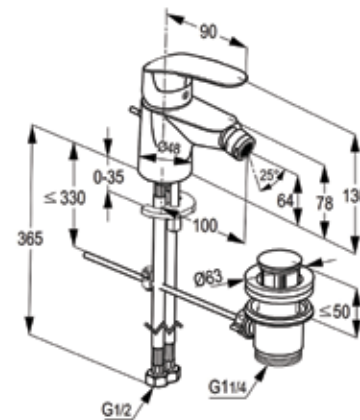
Single lever basin mixer XL DN 15
ceramic cartridge - K35
aerator M 24 x 1
1/2" high pressure flexible hose
with PEX tubes
pop up waste 1 1/4 inch
European Standard - EN 817

**RAK17061**

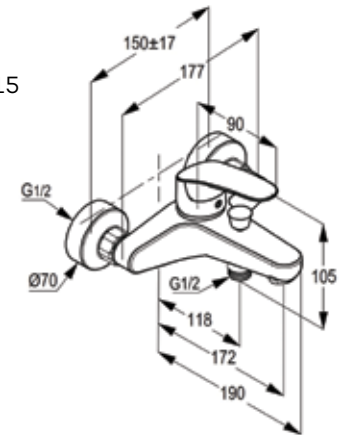
single lever basin mixer XL HR DN 15
ceramic cartridge-K35
aerator M 24 x 1
1/2" high pressure flexible hose with
PEX tubes European standard - EN 817

**RAK17001**

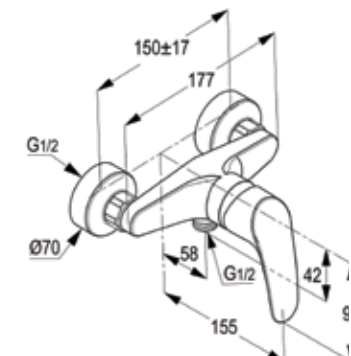
Single lever bidet mixer DN 15
ceramic cartridge-K35
ball joint aerator M 24 x 1
1/2" high pressure flexible hose with PEX tubes
pop up waste 1 1/4 inch
European Standard - EN 817

**RAK17002**

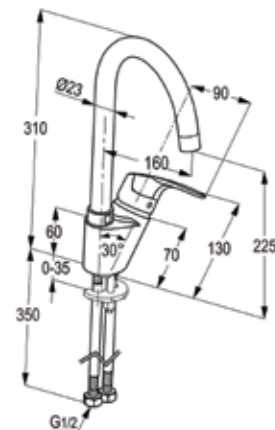
Single lever bath & shower mixer DN 15
without shower set
ceramic cartridge-K35
aerator M 24 X 1
flow class CB
automatic diverter: shower to bath tub
shower outlet G 1/2"
protected against back flow
S- unions 1/2 X 3/4 inch
European standard- EN 817

**RAK17003**

Single lever shower mixer DN 15
ceramic cartridge-K35
flow class B
shower outlet G 1/2"
protected against back flow
S- unions 1/2 X 3/4 inch
European standard- EN 817

**RAK17050**

Single lever sink mixer DN 15
ceramic cartridge-K35
PCA aerator M 22 x 1
swivelling U spout
1/2" high pressure flexible hose
with PEX tubes
European Standard EN 817

**RAK17075**

Concealed single-lever bath &
shower mixer trim set

RAK38636
Pre-installation kit DN 15

**RAK17079**

Concealed single-lever shower
mixer trim set

RAK38828
Pre-installation kit DN 15



POLARIS

DISTINCTIVE DESIGNS THAT IS TRULY AFFORDABLE

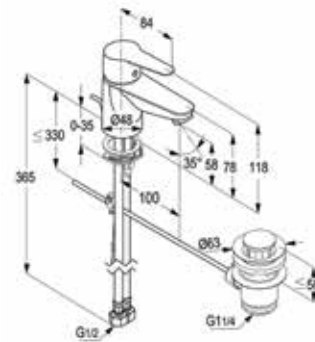
The Polaris range of classic and elegantly crafted mixers is functional at its best. These bathroom and kitchen products are innovatively designed with exceptional finish to suit your contemporary lifestyle. Combined with world class quality and detailed craftsmanship, this series offer functionality and high quality fittings that blend well with both the bathroom and kitchen décor.

The Polaris array of bath & kitchen mixers is worth investing in every household, as they are durable, easy to use and offer excellent value for money.



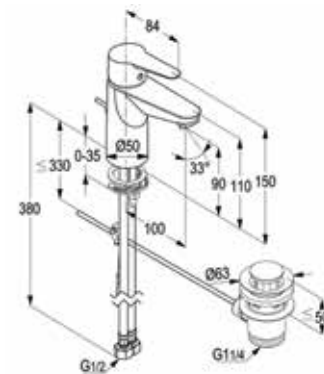
RAK10000

Single lever basin mixer DN 15
ceramic cartridge - K35
aerator M 24 x 1
1/2" high pressure flexible hose
with PEX tubes
pop up waste 1 1/4 inch
European Standard - EN 817



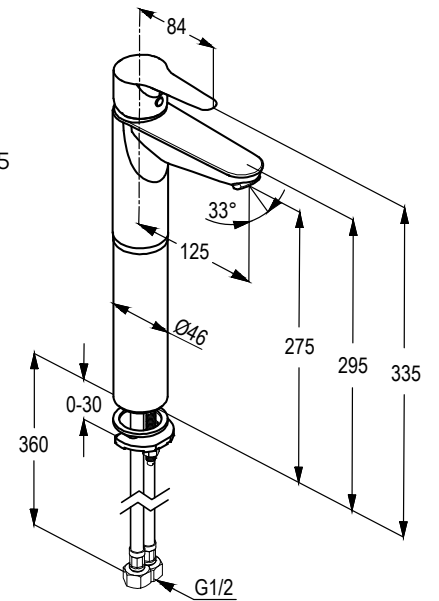
RAK10021

POLARIS STAR - Single lever
basin mixer DN 15
ceramic cartridge - K35
aerator M 24 x 1
1/2" high pressure flexible hose
with PEX tubes
pop up waste 1 1/4 inch
European Standard - EN 817



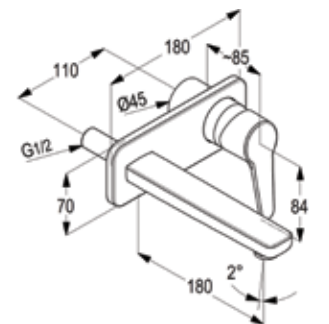
RAK10061

single lever basin mixer XL HR DN 15
ceramic cartridge-K35
aerator M 24 x 1
1/2" high pressure flexible hose with
PEX tubes European standard - EN 817



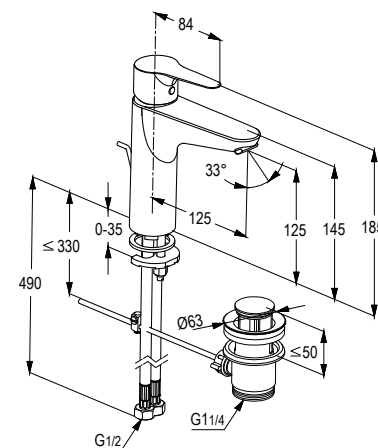
RAK10023

Concealed 2-hole single lever
basin mixer
trim set
aerator M 24 x 1
flow class Z
wall outlet 180 mm
without pre-installation
kit item no. RAK38243



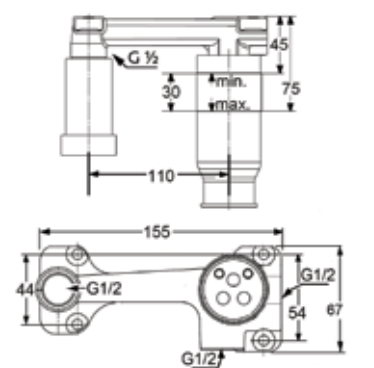
RAK10060

Single lever basin mixer XL DN 15
ceramic cartridge - K35
aerator M 24 x 1
1/2" high pressure flexible
hose with PEX tubes
pop up waste 1 1/4 inch
European Standard - EN 817



RAK38243

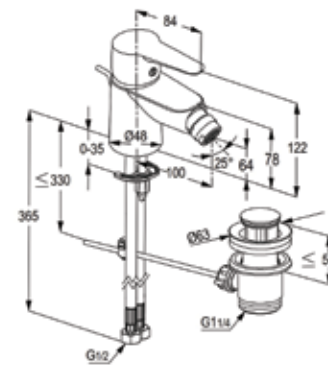
Pre installation kit DN 15





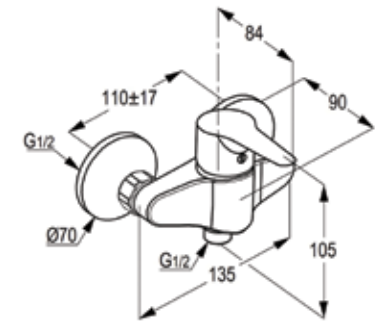
RAK10001

Single lever bidet mixer DN 15
ceramic cartridge-K35
ball joint aerator M 24 x 1
1/2" high pressure flexible hose
with PEX tubes
pop up waste 1 1/4 inch
European Standard - EN 817



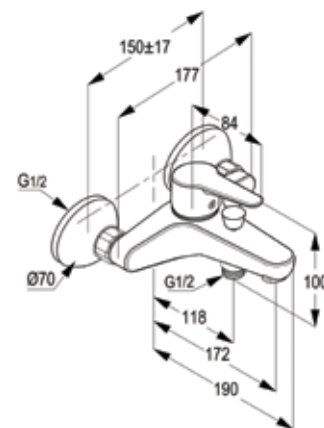
RAK10024

Single lever shattaf mixer DN 15
ceramic cartridge-K35
flow class B
shower outlet G 1/2"
protected against back flow
S- unions 1/2 X 3/4 inch
European standard- EN 817



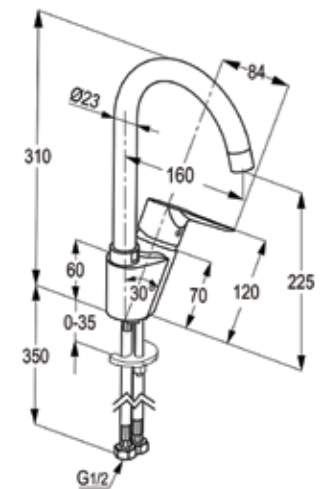
RAK10002

Single lever bath & shower mixer DN 15
without shower set
ceramic cartridge-K35
aerator M 24 X 1
flow class DB
automatic diverter shower to bath tub
shower outlet G 1/2"
protected against back flow
S- unions 1/2 X 3/4 inch
European standard- EN 817



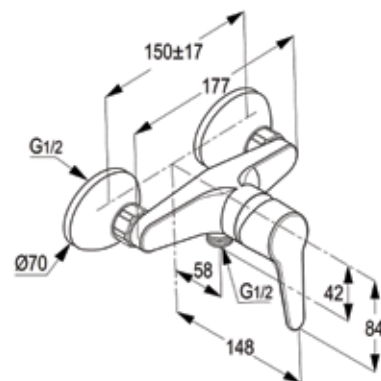
RAK10050

Single lever sink mixer DN 15
ceramic cartridge-K35
PCA aerator M 22 x 1
swivelling U spout
1/2" high pressure flexible hose
with PEX tubes
European Standard EN 817



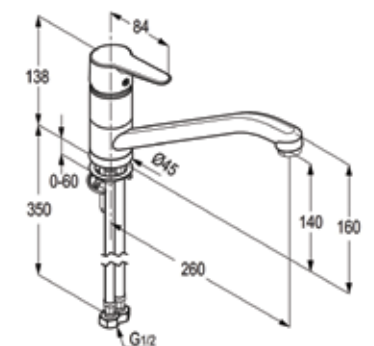
RAK10003

Single lever shower mixer DN 15
ceramic cartridge-K35
flow class B
shower outlet G 1/2"
protected against back flow
S- unions 1/2 X 3/4 inch
European standard- EN 817



RAK10014

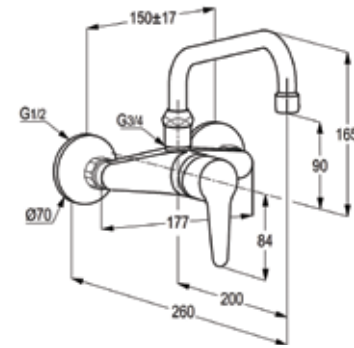
Single lever sink mixer DN 15
ceramic cartridge-K35
swivelling (360°) spout l = 260 mm
aerator M 24 x 1
1/2" high pressure flexible hose
with PEX tubes
European Standard - EN 817





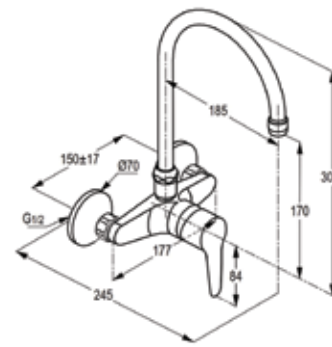
RAK10028

Wall mounted single lever
sink mixer DN 15
ceramic cartridge-K35
swivelling (185°) spout l = 200 mm
aerator M 22 x 1
flow class A
S- unions 1/2 X 3/4 inch
European standard - EN 817



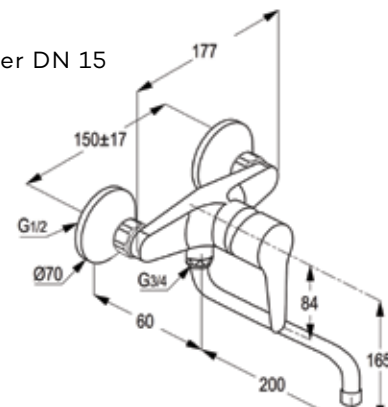
RAK10028SU

Wall mounted single lever sink
mixer DN 15
ceramic cartridge-K35
swivelling (185°) U spout l = 186 mm
aerator M 22 x 1
flow class A
S- unions 1/2 X 3/4 inch
European standard- EN 817



RAK10008

Wall mounted single lever sink mixer DN 15
ceramic cartridge-K35
swivelling (185°) spout l = 200 mm
aerator M 22 x 1
flow class A
S- unions 1/2 X 3/4 inch
European standard- EN 817



RAK10075

Concealed single-lever bath &
shower mixer trim set

RAK38636
Pre-installation kit DN 15



RAK10079

Concealed single-lever shower
mixer trim set

RAK38828
Pre-installation kit DN 15



NEW



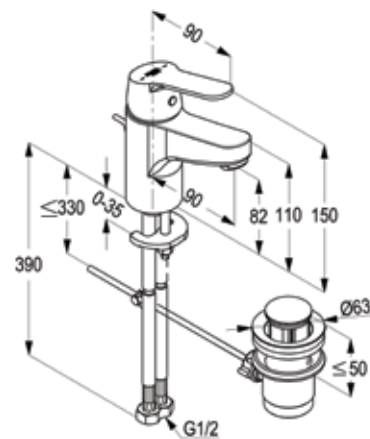
PEAK_{SERIES}

DISTINCTIVE DESIGN THAT
IS TRULY AFFORDABLE

PEAK

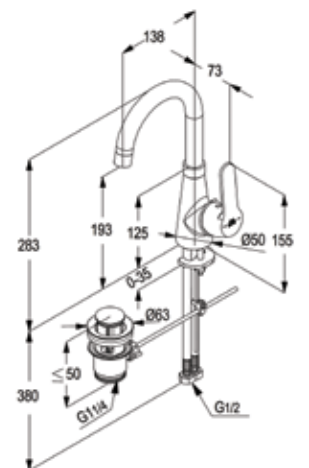
**RAK18000**

Single lever basin mixer DN 15
ceramic cartridge - K35
aerator M 24 x 1
1/2" high pressure flexible hose
with PEX tubes
pop up waste 1 1/4 inch
European Standard- EN 817

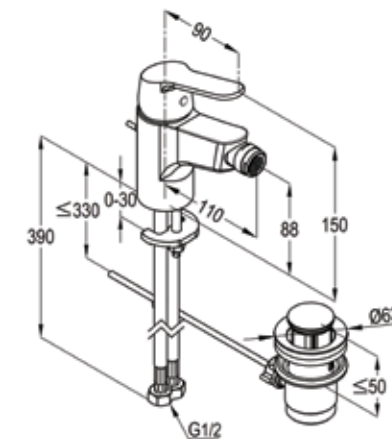


RAK18028

Side Single lever basin mixer DN 15
ceramic cartridge - K35
aerator M 24 x 1
1/2" high pressure flexible hose
with PEX tubes
pop up waste 1 1/4 inch
European Standard- EN 817

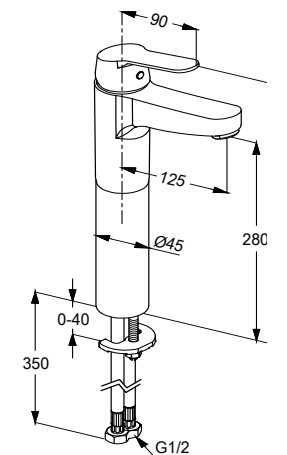
**RAK18001**

Single lever bidet mixer DN 15
ceramic cartridge-K35
ball joint aerator M 24 x 1
1/2" high pressure flexible hose
with PEX tubes
pop up waste 1 1/4 inch
European Standard - EN 817

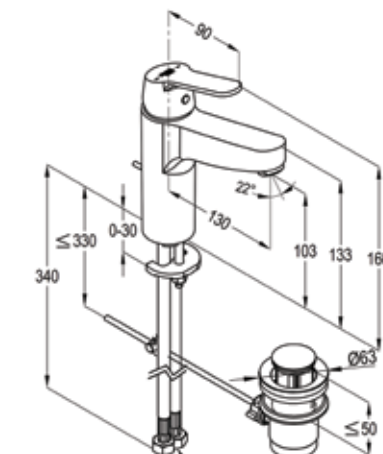


RAK18061

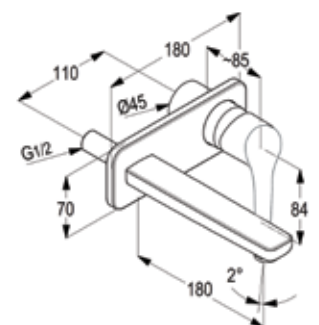
single lever basin mixer XL HR DN 15
ceramic cartridge-K35
aerator M 24 x 1
1/2" high pressure flexible hose
with PEX tubes
European standard - EN 817

**RAK18060**

Single lever basin mixer XL DN 15
ceramic cartridge - K35
aerator M 24 x 1
1/2" high pressure flexible hose
with PEX tubes
pop up waste 1 1/4 inch
European Standard - EN 817

**RAK18023**

Concealed 2-hole single lever
basin mixer
trim set
aerator M 24 x 1
flow class Z
wall outlet 180 mm
without pre-installation
kit item no. RAK38243



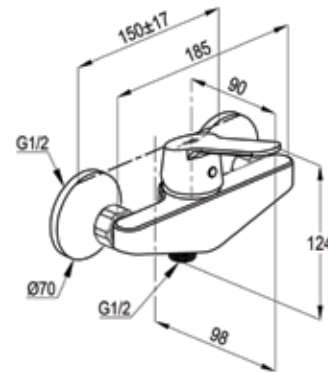
RAK38243

Pre installation kit DN 15



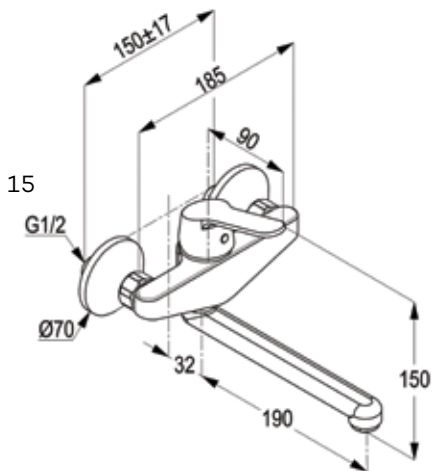
RAK18003

Single lever shower mixer DN 15
ceramic cartridge-K35
flow class B
shower outlet G 1/2"
protected against back flow
S- unions 1/2 X 3/4 inch
European standard- EN 817



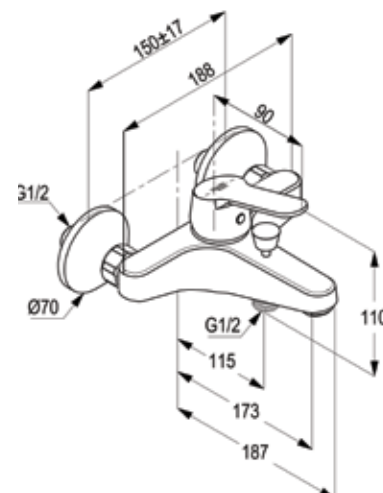
RAK18008

Wall mounted single lever sink mixer DN 15
ceramic cartridge-K35
swivelling (185°) spout l = 200 mm
aerator M 24 x 1
flow class A
S- unions 1/2 X 3/4 inch
European standard- EN 817



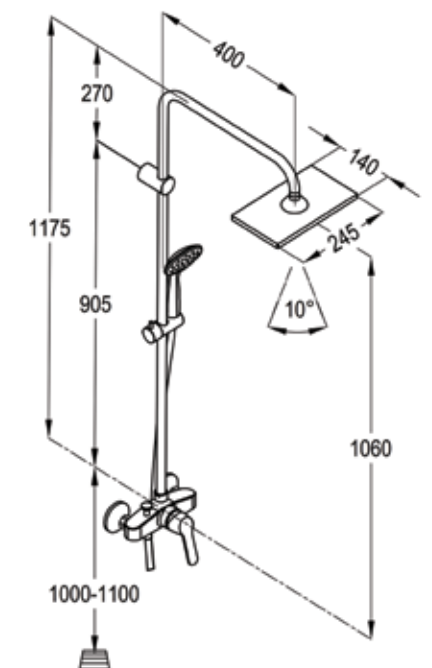
RAK18002

Single lever bath & shower mixer DN 15
without shower set
ceramic cartridge-K35
aerator M 24 X 1
flow class CB
automatic diverter shower to bath tub
shower outlet G 1/2"
protected against back flow
S- unions 1/2 X 3/4 inch
European standard- EN 817



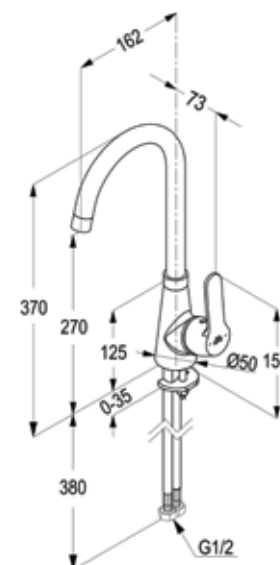
RAK18032

Shower mixer with Dual shower
system L-shape
L = 1175 mm
wall fastening
hand and head shower
with diverter
with 1S hand held shower 1/2 inch
ridgeless adjustable shower holder
vertically and cylindrically
adjustable shower holder
shower hose
1/2 x 1/2 inch x 1600mm
with fixing kit
swivel head shower



RAK18004

Single lever sink mixer DN 15
ceramic cartridge-K35
PCA aerator M 22 x 1
swivelling U spout
1/2" high pressure flexible hose
with PEX tubes
European Standard EN 817



RAK18075

Concealed single-lever bath &
shower mixer trim set

RAK38636
Pre-installation kit DN 15



RAK18079

Concealed single-lever shower
mixer trim set

RAK38828
Pre-installation kit DN 15

POLO

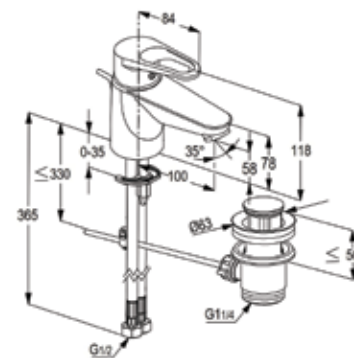
SHAPED TO ADD VALUE TO EVERYDAY LIFE

Noteworthy for its everyday practical applications, the Polo series from CSAT GROUP is a must-have in every household. Equipped with a looped handle design, Polo mixers are ingeniously shaped and easy to operate. The entire array of Polo products are durable, highly functional, and offer good value for money.



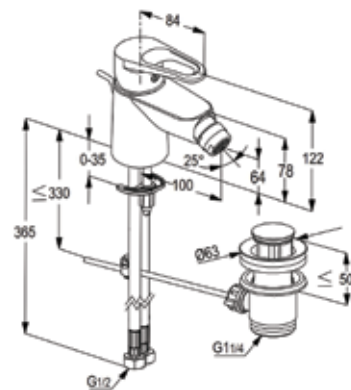
RAK30030

POLO Eco- Single lever
basin mixer DN 15
ceramic cartridge-K35
aerator M 24 x 1
1/2" high pressure flexible hose
with PEX tubes
pop up waste 1 1/4 inch
European Standard - EN 817

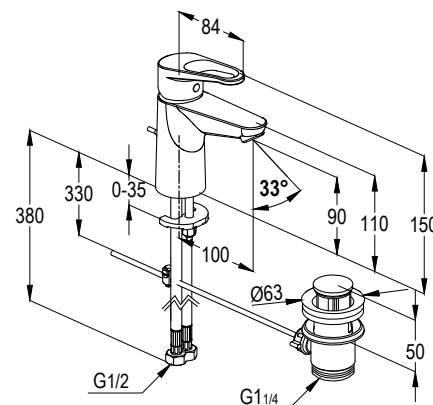


RAK30001

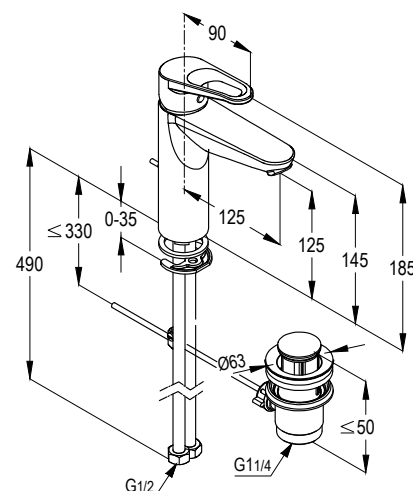
Single lever bidet mixer DN 15
ceramic cartridge-K35
ball joint aerator M 24 x 1
1/2" high pressure flexible hose
with PEX tubes
pop up waste 1 1/4 inch
European Standard - EN 817

**RAK30040**

POLO STAR Eco - Single lever
basin mixer DN 15
ceramic cartridge - K35
aerator M 24 x 1
1/2" high pressure flexible hose
with PEX tubes
pop up waste 1 1/4 inch
European Standard - EN 817

**RAK30060**

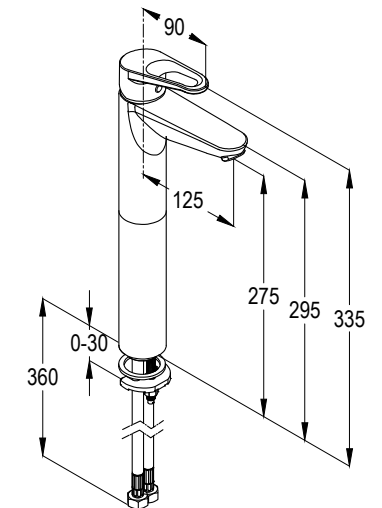
Single lever basin mixer XL DN 15
ceramic cartridge - K35
aerator M 24 x 1
1/2" high pressure flexible hose
with PEX tubes
pop up waste 1 1/4 inch
European Standard - EN 817



P O L O

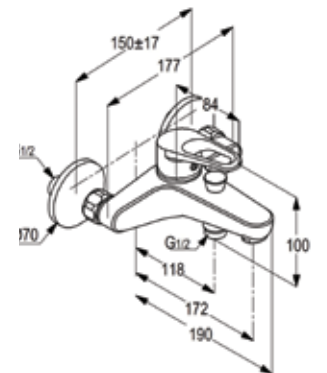
RAK30061

single lever basin mixer XL HR DN 15
ceramic cartridge-K35
aerator M 24 x 1
1/2" high pressure flexible hose with
PEX tubes
European standard - EN 817



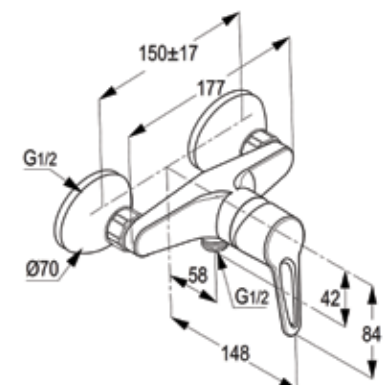
RAK30002

Single lever bath & shower mixer DN 15
without shower set
ceramic cartridge-K35
aerator M 24 X 1
flow class CB
automatic diverter: shower to bath tub
shower outlet G 1/2"
protected against back flow
S- unions 1/2 X 3/4 inch
European standard- EN 817



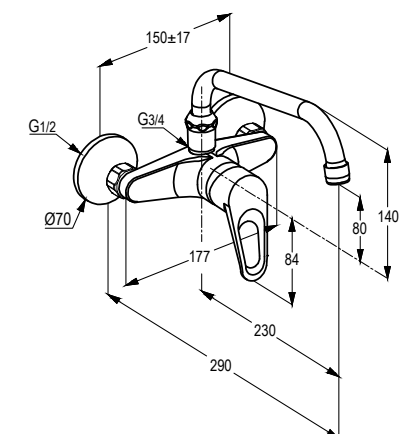
RAK30003

Single lever shower mixer DN 15
ceramic cartridge-K35
flow class B
shower outlet G 1/2"protected
against back flow
S- unions 1/2 X 3/4 inch
European standard- EN 817



RAK30029

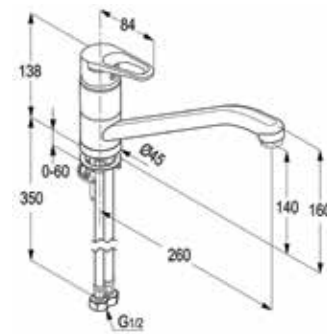
Wall mounted single lever sink
mixer DN 15
ceramic cartridge-K35
swivelling (185°) spout l = 230 mm
aerator M 22 x 1
flow class A
S- unions 1/2 X 3/4 inch
European standard - EN 817





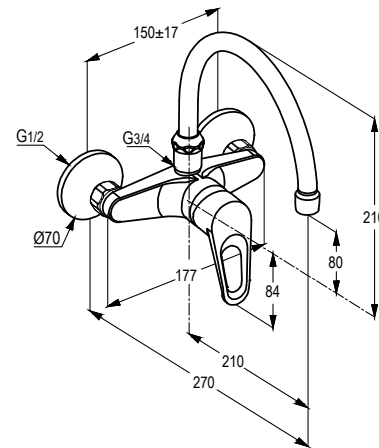
RAK30014

Single lever sink mixer DN 15
ceramic cartridge-K35
swivelling (360°) spout l = 260 mm
aerator M 24 x 1
1/2 " high pressure flexible hose
with PEX tubes
European Standard - EN 817



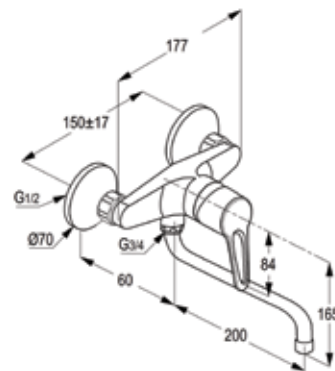
RAK30029SU

Wall mounted single lever
sink mixer DN 15
ceramic cartridge-K35
swivelling (185°) U spout l = 210 mm
aerator M 22 x 1
flow class A
S- unions 1/2 X 3/4 inch
European standard- EN 817



RAK30008

Wall mounted single lever
sink mixer DN 15
ceramic cartridge-K35
swivelling (185°) spout l = 200 mm
aerator M 22 x 1
flow class A
S- unions 1/2 X 3/4 inch
European standard- EN 817



RAK30075

Concealed single-lever bath
shower mixer trim set

RAK38636
Pre-installation kit DN 15



RAK30079

Concealed single-lever shower
mixer trim set

RAK38828
Pre-installation kit DN 15





PREMIER

TIMELESS DESIGNS THAT MEET EVERY STYLE PREFERENCE

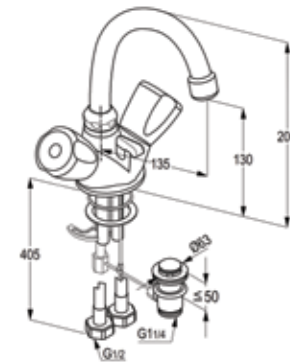
Top-notch quality and long-term durability personifies the Premier bath & kitchen fittings from CSAT GROUP. Fittings from the Premier collection are focussed on making use of water easy and sustainable. Premier mixers are made with the traditional design, latest technology and top-grade materials to match your varied needs.

With Premier fittings installed in your home, you can enjoy a host of benefits and features at an affordable price.



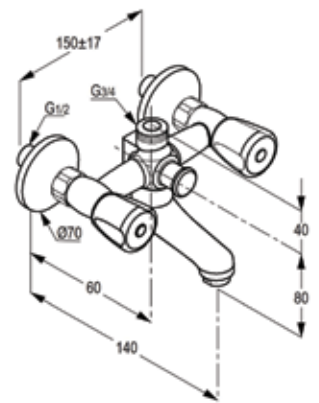
RAK35004

Dual controlled basin mixer DN15
swivel spout
aerator M 22 x 1
1/2" high pressure flexible hose
with PEX tubes
pop up waste 1 1/4"
European Standard - EN 200

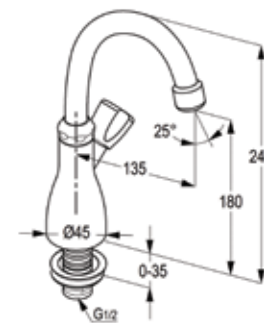


RAK35006

Dual controlled bath and shower mixer DN15
without shower set
aerator M24x1
flow class CB
casted spout
S- unions 1/2 inch x 3/4 inch
automatic diverter shower to bath tub
shower outlet 3/4 inch
European standard- EN200

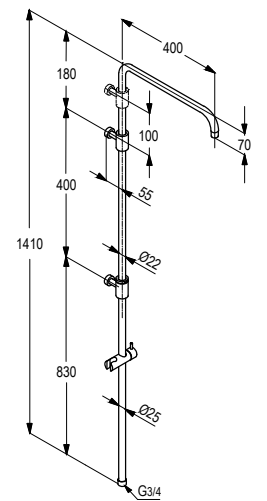
**RAK35003**

Pillar tap DN15
single hole deck mounted with
swivel spout
aerator M22 x 1
flow class A
marked : blue
European standard- EN200



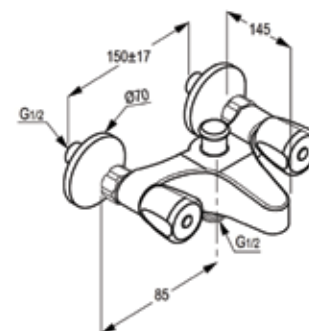
RAK22042

Brass Exposed shower Pipe



RAK35005

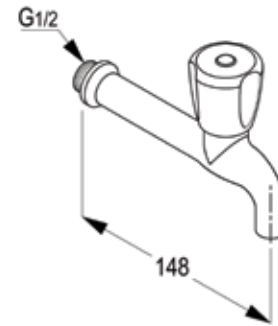
Dual controlled bath and shower
mixer DN 15
without shower set
aerator M24x1
flow class CB
S-unions 1/2 inch x 3/4 inch
automatic diverter : shower to bath tub
shower outlet 1/2 inch
European standard- EN200





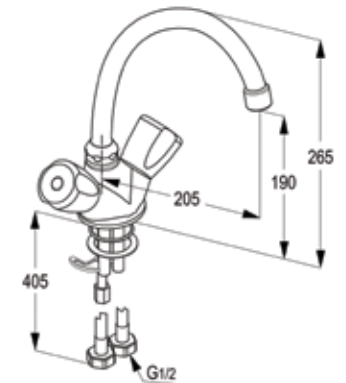
RAK35007

Long Bibcock DN15
marked : blue
thread connection 1/2 inch
European standard- EN200



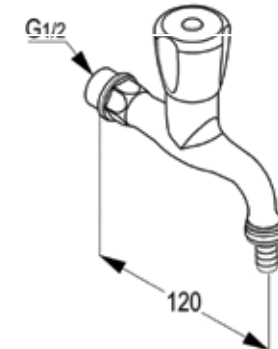
RAK35000

Dual controlled sink mixer DN15
deck mounted with swivel spout
aerator M22 x 1
1/2"high pressure flexible
hose with PEX tubes
European Standard - EN 200



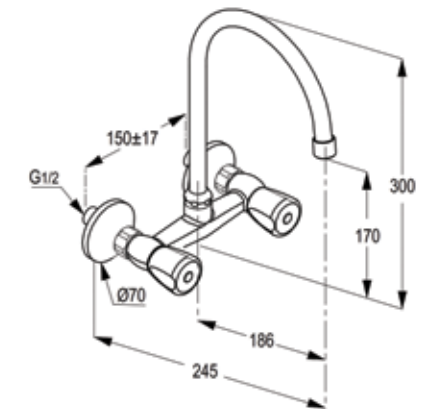
RAK35002

Bibcock DN15
marked : blue
thread connection 1/2 inch
European standard- EN200



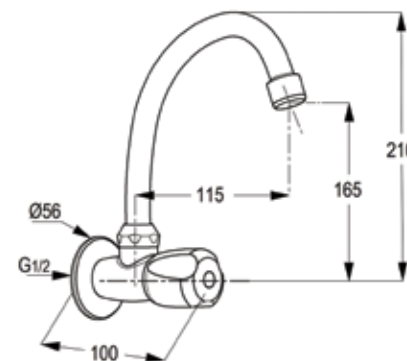
RAK35001SU

Dual controlled wall
mounted sink mixer DN 15
swivel U spout
aerator M22 x 1
flow class A
S- unions 1/2 inch x 3/4 inch
European standard- EN200



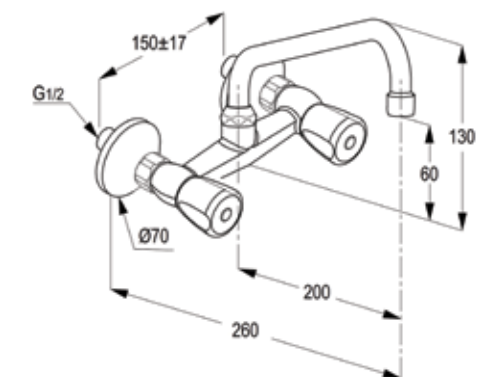
RAK35008

Wall mounted sink tap DN15
marked : blue
swivel spout
aerator M22x1
flow class A
thread connection 1/2 inch
European standard- EN200



RAK35001

Dual controlled wall
mounted sink mixer DN 15
swivel spout
aerator M22 x 1
flow class A
S- unions 1/2 inch x 3/4 inch
European standard- EN200



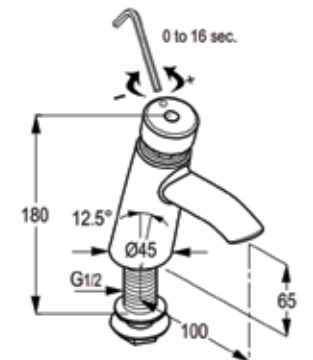
SELF CLOSING

Built with superior technology, our array of free-standing single lever taps is timed to make efficient use of water. Compatible with all water systems for traditional and modern bathrooms, these self-closing, push type faucets from CSAT GROUP is ideal for both residential and commercial usage.



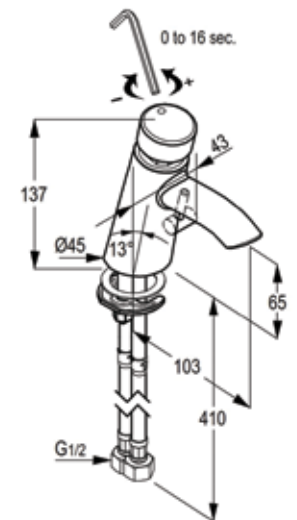
RAK50001

Self Closing Tap - Push type DN 15
push type
cache type aerator M16.5x1
minimum working pressure 0.1bar
maximum working pressure 3 bar
time of water flow 0 to 16sec
with 2mm allen key for time adjustment



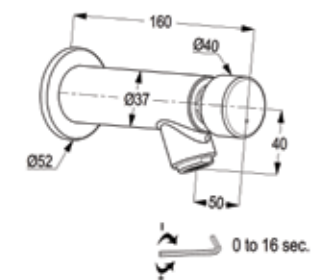
RAK50002

Self Closing Mixer DN15
push type
1/2 inch high pressure
flexible hose with PEX tubes
with cache aerator M16.5x1
minimum working pressure 0.1bar
maximum working pressure 3 bar
time of water flow 0 to 16sec
with 2mm allen key for time adjustment



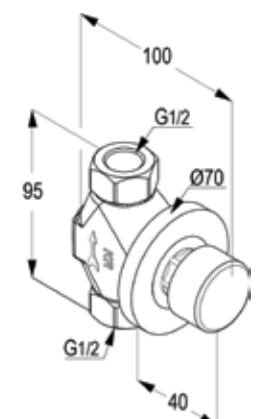
RAK50003

Wall Mounted Self Closing Tap Push
type DN 15
with S point aerator
minimum working pressure 0.1bar
maximum working pressure 3 bar
time of water flow 0 to 16sec
with 2mm allen key for time adjustment



RAK50004

Concealed valve
self closing (outdoor)-DN15
Push type timing device
connection 1/2 inch
maximum time of water flow 15 sec





SINK MIXER





RAK14114

Single lever sink mixer DN 15
Ceramic cartridge with hot water
safety device Ø35 mm swivelling
(360°) rectangular spout l = 230 mm
PCA aerator M 24 x 1
flexible high pressure supply tubes
European Standard- EN 817



RAK14014

Single lever sink mixer DN 15
Ceramic cartridge with hot
water safety device Ø35 mm
swivelling (360°) rectangular
spout l = 230 mm
PCA aerator M 24 x 1
flexible high pressure
supply tubes
European Standard- EN 817



RAK13012

Single lever sink mixer DN 15
ceramic cartridge-K35
swivelling (360°) spout l = 210 mm
PCA cache aerator M 16.5 x 1
1/2" high pressure flexible hose
with PEX tubes
European Standard- EN 817



RAK17050

Single lever sink mixer DN 15
ceramic cartridge-K35
PCA aerator M 22 x 1
swivelling U spout
1/2" high pressure flexible hose
with PEX tubes
European Standard EN 817



RAK35000

Dual controlled sink mixer DN15
deck mounted with swivel spout
aerator M22 x 1
1/2"high presssure flexible
hose with PEX tubes
European Standard - EN 200



RAK15004

Single lever sink mixer DN 15
ceramic cartridge-K35
aerator M 24 x 1
swivelling (360°) spout l = 200 mm
1/2 " high presssure flexible hose
with PEX tubes
European standard EN 817



RAK12012

Single lever sink mixer DN 15
ceramic cartridge-K35
swivelling (360°)spout l=215 mm
PCA cache aerator M16.5X1
1/2" high pressure flexible hose
with PEX tubes
European Standard - EN 817



RAK10050

Single lever sink mixer DN 15
ceramic cartridge-K35
PCA aerator M 22 x 1
swivelling U spout
1/2" high pressure flexible hose
with PEX tubes
European Standard EN 817



RAK18004

Single lever sink mixer DN 15
ceramic cartridge-K35
PCA aerator M 22 x 1
swivelling U spout
1/2" high pressure flexible hose
with PEX tubes
European Standard EN 817



RAK10014

Single lever sink mixer DN 15
ceramic cartridge-K35
swivelling (360°) spout l = 260 mm
aerator M 24 x 1
1/2" high pressure flexible hose
with PEX tubes
European Standard - EN 817



RAK30014

Single lever sink mixer DN 15
ceramic cartridge-K35
swivelling (360°) spout l = 260 mm
aerator M 24 x 1
1/2 " high pressure flexible hose
with PEX tubes
European Standard - EN 817



RAK11010

Single lever sink mixer DN 15
ceramic cartridge-K35
swivelling (360°) spout l = 260 mm
aerator M 24 x 1
1/2" high pressure flexible hose
with PEX tubes
European Standard - EN 817



RAK18008

Wall mounted single lever sink mixer DN 15
ceramic cartridge-K35
swivelling (185°) spout l = 200 mm
aerator M 24 x 1
flow class A
S- unions 1/2 X 3/4 inch
European standard- EN 817



RAK10028

Wall mounted single lever sink mixer DN 15
ceramic cartridge-K35
swivelling (185°) U spout l = 200 mm
aerator M 22 x 1
flow class A
S- unions 1/2 X 3/4 inch
European standard - EN 817



RAK10028SU

Wall mounted single lever sink mixer DN 15
ceramic cartridge-K35
swivelling (185°) U spout l = 186 mm
aerator M 22 x 1
flow class A
S- unions 1/2 X 3/4 inch
European standard- EN 817



RAK11009

Wall mounted single lever sink mixer DN 15
ceramic cartridge-K35
swivelling (185°) spout l = 200 mm
aerator M 22 x 1
flow class A
S- unions 1/2 X 3/4 inch
European standard- EN 817



RAK10008

Wall mounted single lever sink mixer DN 15
ceramic cartridge-K35
swivelling (185°)
spout l = 200 mm
aerator M 22 x 1
flow class A
S- unions 1/2 X 3/4 inch
European standard- EN 817



RAK30008

Wall mounted single lever sink mixer DN 15
ceramic cartridge-K35
swivelling (185°)
spout l = 200 mm
aerator M 22 x 1
flow class A
S- unions 1/2 X 3/4 inch
European standard- EN 817



RAK30029

Wall mounted single lever sink mixer DN 15
ceramic cartridge-K35
swivelling (185°) spout l = 230 mm
aerator M 22 x 1
flow class A
S- unions 1/2 X 3/4 inch
European standard - EN 817



RAK30029SU

Wall mounted single lever sink mixer DN 15
ceramic cartridge-K35
swivelling (185°) U spout l =210 mm
aerator M 22 x 1
flow class A
S- unions 1/2 X 3/4 inch
European standard- EN 817



RAK35001

Dual controlled wall mounted sink mixer DN 15
swivel spout
aerator M22 x 1
flow class A
S- unions 1/2 inch x 3/4 inch
European standard- EN200



RAK35001SU

Dual controlled wall mounted sink mixer DN 15
swivel U spout
aerator M22 x 1
flow class A
S- unions 1/2 inch x 3/4 inch
European standard- EN200



RAK35008

Wall mounted sink tap DN15
marked : blue
swivel spout
aerator M22x1
flow class A
thread connection 1/2 inch
European standard- EN200



CONCEALED FITTINGS

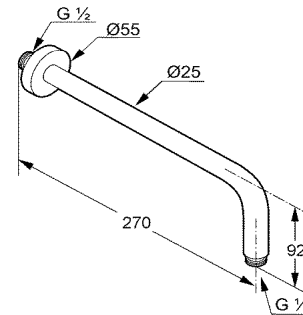
Space being an essential feature in the shower area, at CSAT GROUP our innovators with their practical planning and integration of the world's latest technology have designed concealed bath and shower mixers with a multitude of design options and features.

Sleek and sophisticated Concealed Fittings from CSAT GROUP make efficient use of shower space without compromising on its functionality and user's comfort.



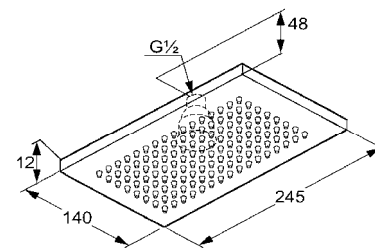
RAK10012

Shower arm 250 mm, DN 15
Projection 250 mm
with sliding cover plate
male thread 1/2 inch



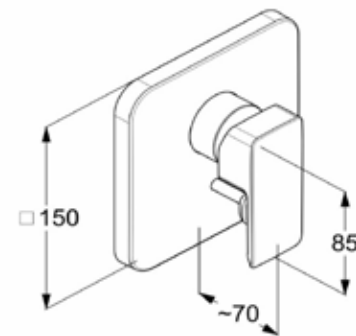
RAK14018

Overhead shower DN 15
245 mm x 140 mm
with cleaning system
with ball joint connection 1/2 inch



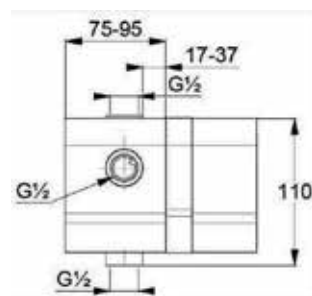
RAK14175

Concealed single-lever bath &
shower mixer trim set



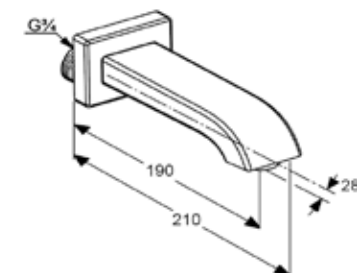
RAK38636

Pre-installation kit DN 15



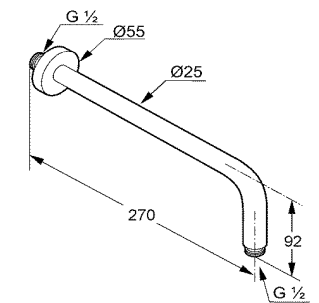
RAK14008

Bath Spout Profile DN 20
wall spout DN 20
projection 190 mm
wall fastening
s-pointer aerator M 24 x 1
flow class C



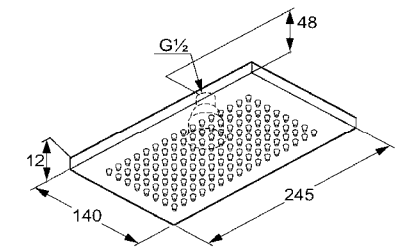
RAK10012

Shower arm 250 mm, DN 15
Projection 250 mm
with sliding cover plate
male thread 1/2 inch



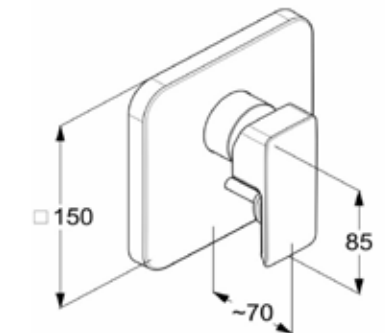
RAK14018

Overhead shower DN 15
245 mm x 140 mm
with cleaning system
with ball joint connection 1/2 inch



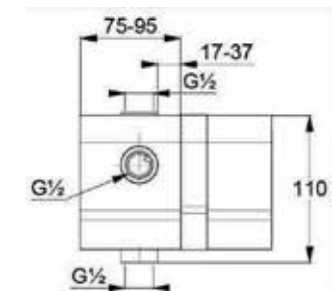
RAK14175

Concealed single-lever bath &
shower mixer trim set



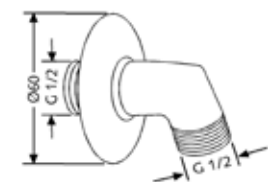
RAK38636

Pre-installation kit DN 15



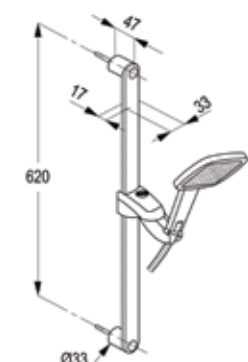
RAK6054005

Wall supply DN 15
protected against back flow
with wall flange
connection 1/2 inch



RAK14009

Profile shower set 1S
wall bar L = 600 mm
Profile 1S hand shower
SUPARAFLEX shower hose
1/2 x 1/2 inch x 1600mm

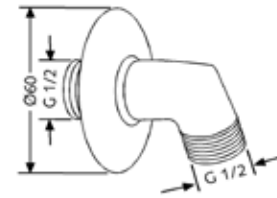


BATH SPOUT



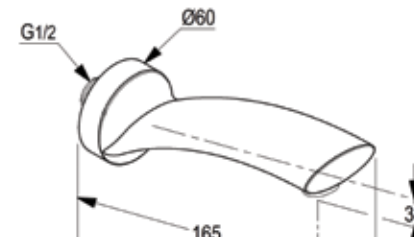
RAK6054005

Wall supply DN 15
with wall flange
connection 1/2 inch



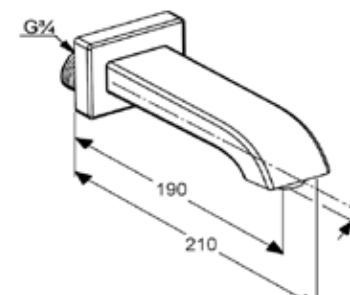
RAK15007

HARMONY
wall spout DN 15
wall fastening
aerator M 24 x 1
flow class C
with sliding cover plate
projection 165/187 mm
in accordance to EN 200



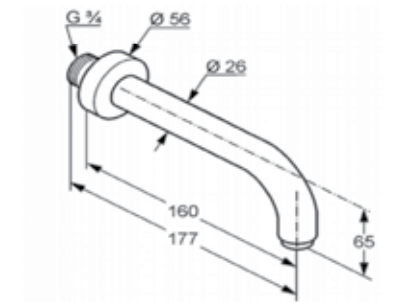
RAK14008

PROFILE
wall spout DN 20
projection 190 mm
wall fastening
s-pointer aerator M 24 x 1
flow class C



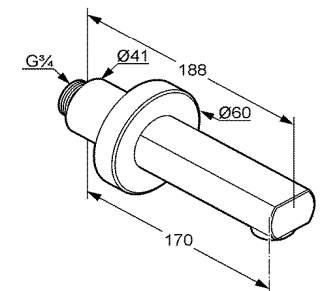
RAK12007

PRIME
Wall spout DN 20
wall projection 160 mm
wall fastening
cascade aerator M 24 x 1
flow class C
with sliding cover plate
in accordance to EN 200



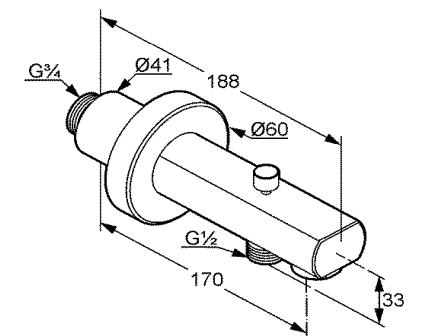
RAK10007

POLARIS
wall spout DN 20
wall fastening
aerator M28 X 1
flow class B
with sliding cover plate
projection 170 mm
in accordance to EN 200



RAK11013

PROJECT
wall spout DN 20
aerator M 28 x 1
flow class BB
automatic diverter: shower to
bath tub
shower outlet 1/2 inch
protected against back flow
with sliding cover
plate Ø 60 mm
projection 170 mm

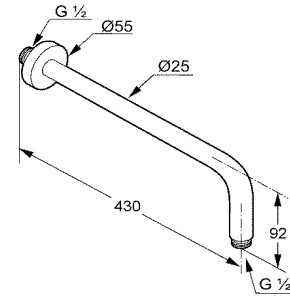


SHOWER ARM



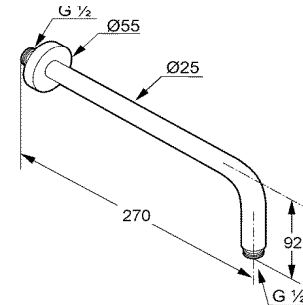
RAK12013

Shower arm 400 mm, DN 15
Projection 400 mm
with sliding cover plate
male thread 1/2 inch



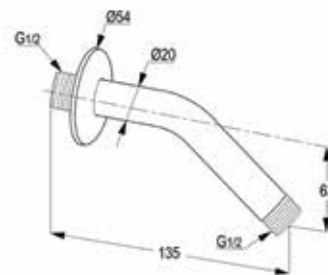
RAK10012

Shower arm 250 mm, DN 15
Projection 250 mm
with sliding cover plate
male thread 1/2 inch



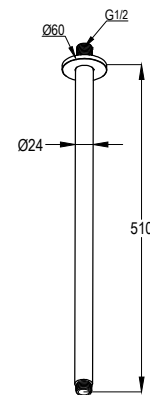
RAK45001

Shower arm 135 mm, DN 15
Projection 135 mm
with sliding cover plate
male thread 1/2 inch



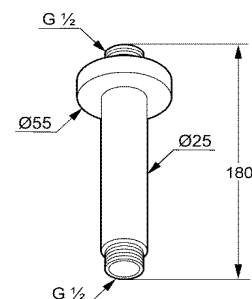
RAK10019

Ceiling Shower arm 500mm, DN 15
Projection 500 mm
with sliding cover plate
male thread 1/2 inch



RAK10011

Ceiling Shower arm 150mm, DN 15
Projection 150 mm
with sliding cover plate
male thread 1/2 inch

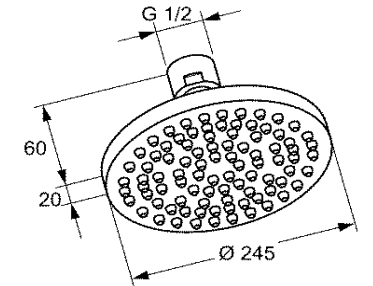


OVER HEAD SHOWER



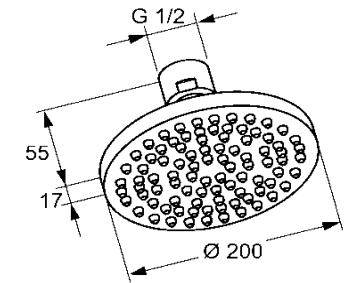
RAK12014

Over head Shower DN 15,
Ø 245 mm
with swivel ball joint 1/2" inch



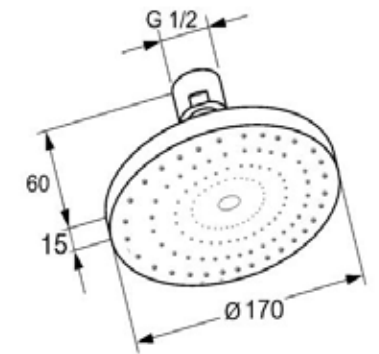
RAK11012

Over head Shower DN 15,
Ø 200 mm
with swivel ball joint 1/2" inch



RAK22055

Over head Shower DN 15,
Ø 170 mm
with swivel ball joint 1/2" inch

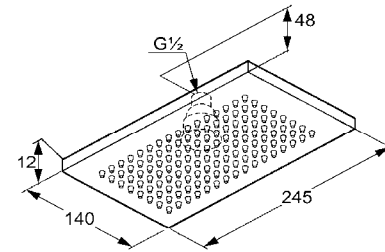


OVER HEAD SHOWER



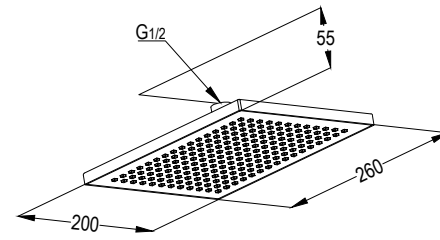
RAK14018

Overhead shower DN 15
245 mm x 140 mm
with cleaning system
with ball joint connection 1/2 inch



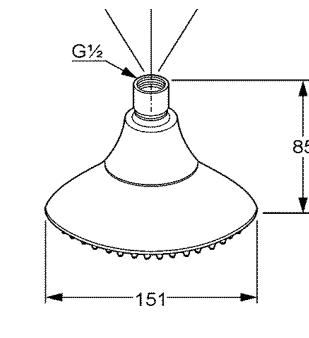
RAK22056

Overhead shower DN 15
260 mm x 200 mm
with cleaning system
with ball joint connection 1/2 inch



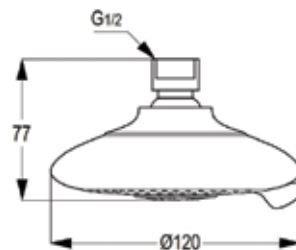
RAK10013

Over head Shower DN 15,
Ø 151 mm
with swivel ball joint 1/2" inch



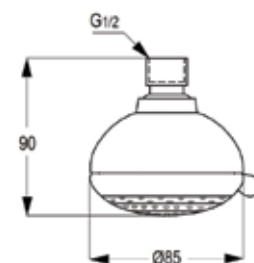
RAK44002

Over head Shower 4S - DN 15,
Ø 120 mm
with swivel ball joint 1/2" inch
Jet kind : spray/misty/massage/
spray & massage



RAK44001

Over head Shower 4S - DN 15,
Ø 85 mm
with swivel ball joint 1/2" inch
Jet kind : spray/misty/massage/
spray & massage



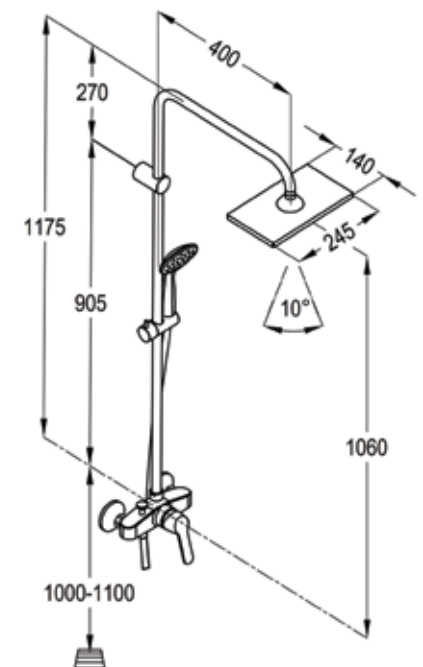
OVER HEAD SHOWER

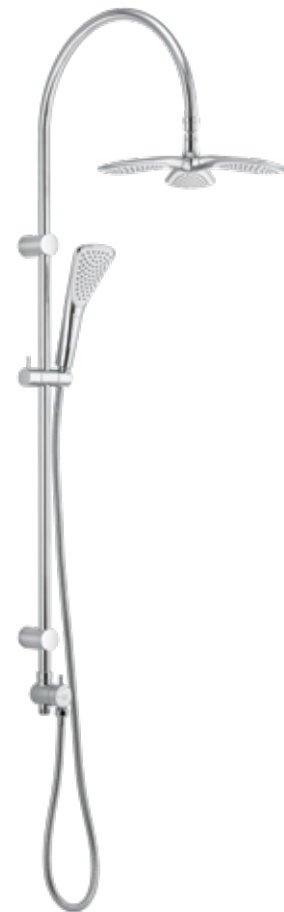
DUAL SHOWERS



RAK18032

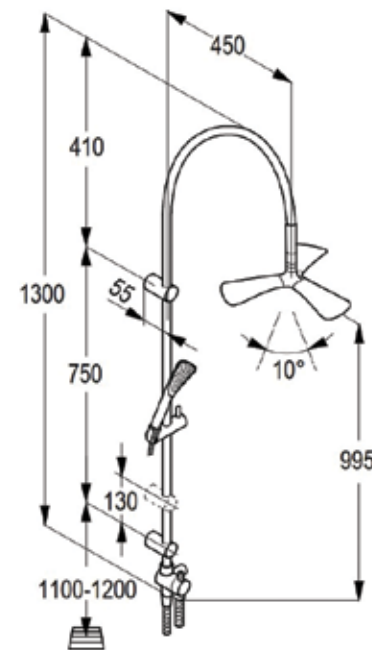
Shower mixer with Dual shower system L-shape
L = 1175 mm
wall fastening
hand and head shower with diverter
with 1S hand held shower 1/2 inch
ridgeless adjustable shower holder
vertically and cylindrically
adjustable shower holder
shower hose
1/2 x 1/2 inch x 1600mm
with fixing kit
swivel head shower





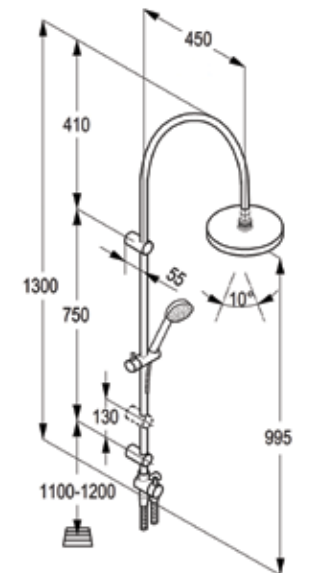
RAK6167805

Dual shower system U-shape
L = 1300 mm
wall fastening
hand and head shower
two way ceramic diverter
with 1S hand held shower 1/2 inch
ridgeless adjustable shower holder
vertically and cylindrically
adjustable shower holder
shower hose 1/2 x 1/2 inch x
1600mm with fixing kit
swivel head shower



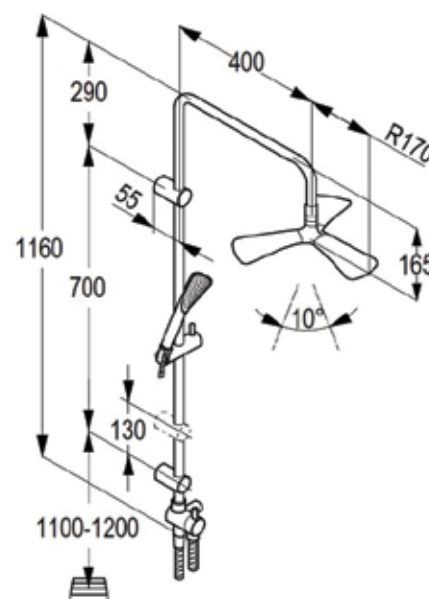
RAK6167705

Dual shower system U-shape
L = 1300 mm
wall fastening
hand / head shower
two way ceramic diverter
with 1S hand held shower 1/2 inch
ridgeless adjustable shower holder
vertically and cylindrically
adjustable shower holder
with fixing kit
shower hose 1/2 x 1/2 inch x 1600 mm
swivel head shower



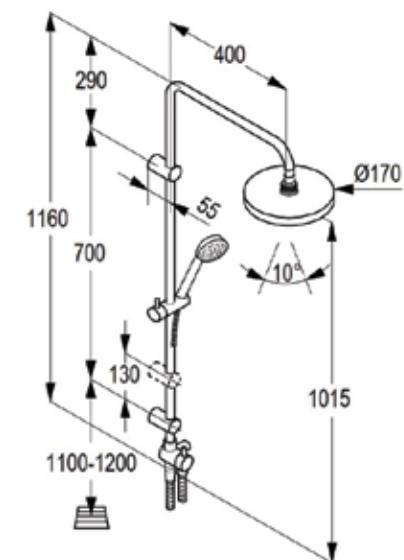
RAK48003

Dual shower system L-shape
L = 1160 mm
wall fastening
hand and head shower
two way ceramic diverter
with 1S hand held shower 1/2 inch
ridgeless adjustable shower holder
vertically and cylindrically
adjustable shower holder
shower hose 1/2 x 1/2 inch x 1600mm
with fixing kit
swivel head shower



RAK48002

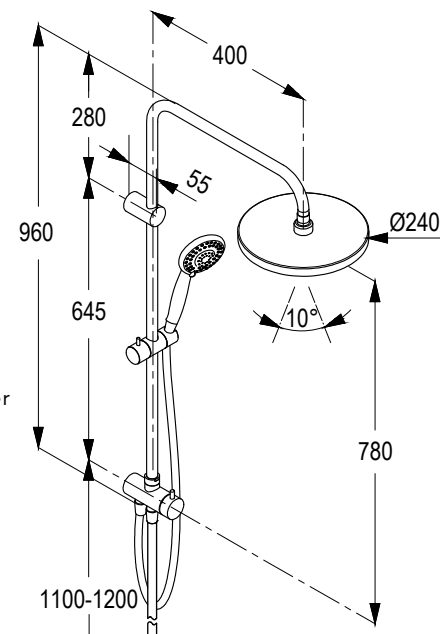
Dual shower system L-shape
L = 1160 mm
wall fastening
hand / head shower
two way ceramic diverter
with 1S hand held shower 1/2 inch
ridgeless adjustable shower holder
vertically and cylindrically adjustable
shower holder with fixing kit
shower hose 1/2 x 1/2 inch x 1600 mm
swivel head shower





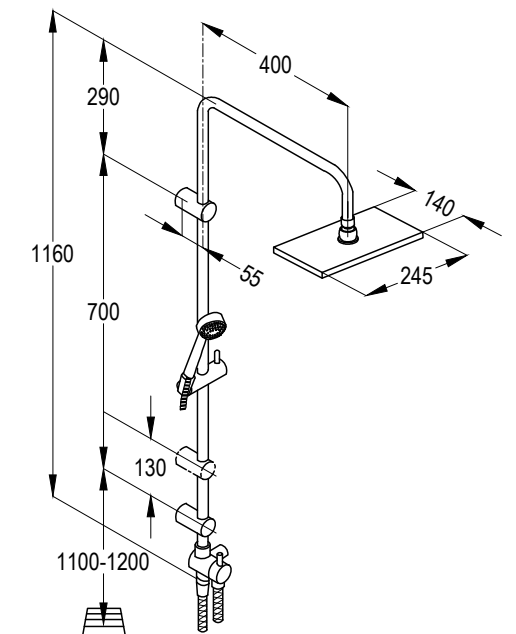
RAK48000

Dual shower system L-shape
L = 960 mm
wall fastening
hand and head shower
two way ceramic diverter
with 4S hand held shower 1/2 inch
ridgeless adjustable shower holder
vertically and cylindrically adjustable
shower holder
shower hose 1/2 x 1/2 inch x 1500mm
with fixing kit swivel Round head shower



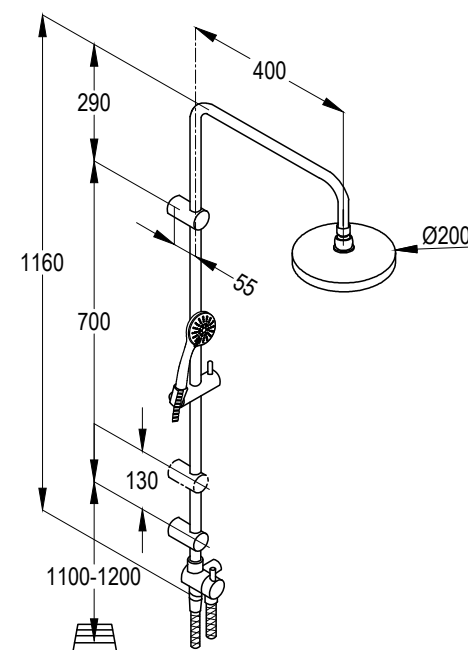
RAK48005

Dual shower system L-shape
L = 1160 mm
wall fastening
hand and head shower
two way ceramic diverter
with 1S hand held shower 1/2 inch
ridgeless adjustable shower holder
vertically and cylindrically adjustable
shower holder
shower hose 1/2 x 1/2 inch x 1500mm
with fixing kit swivel head shower



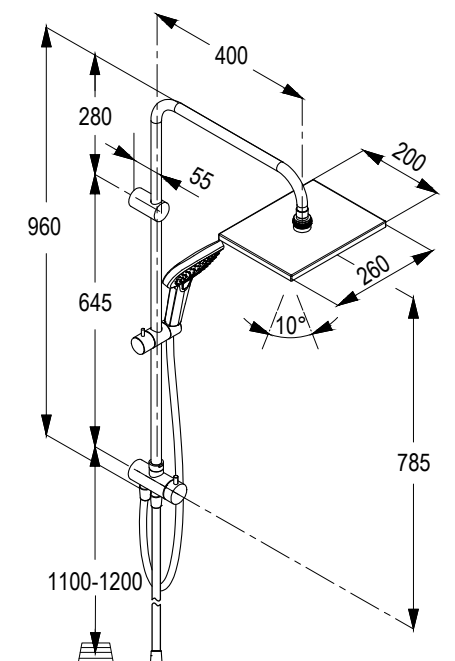
RAK48007

Dual shower system L-shape
L = 1160 mm
wall fastening
hand and head shower
two way ceramic diverter
with easy open 3S hand
held shower 1/2 inch
ridgeless adjustable shower holder
vertically and cylindrically adjustable
shower holder
shower hose 1/2 x 1/2 inch x 1500mm
with fixing kit swivel head shower



RAK48001

Dual shower system L-shape
L = 960 mm
wall fastening
hand and head shower
two way ceramic diverter
with 3S hand held shower 1/2 inch
ridgeless adjustable shower holder
vertically and cylindrically adjustable
shower holder
shower hose 1/2 x 1/2 inch x 1500mm
with fixing kit swivel square head shower





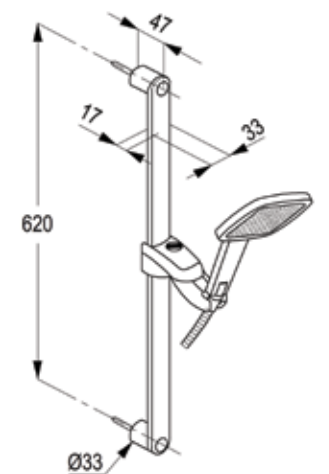
SHOWER

SHOWER



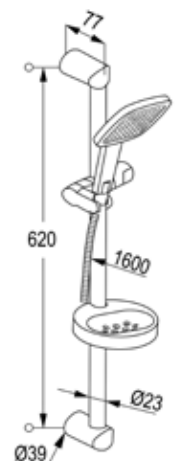
RAK14009
1S Shower set L=600 mm

PROFILE
wall bar with ridgeless adjustable shower holder with horizontally and vertically adjustable slider with release button
Profile 1S hand shower with cleaning system
SUPARAFLEX hose 1/2 x 1/2 inch x 1600 mm with conical nuts with screws and dowels



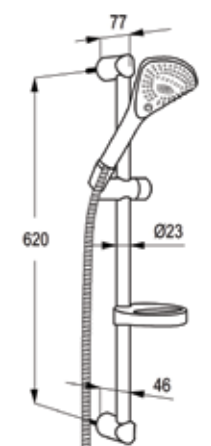
RAK14019
1S Shower set L=600 mm

PROFILE PLUS
wall bar with ridgeless adjustable shower holder with horizontally and vertically adjustable slider with release button
Profile 1S hand shower with cleaning system
Logo flex hose 1/2 x 1/2 inch x 1600 mm with conical nuts with screws and dowels



RAK6771005
3S Shower set L=600 mm

FIZZ
wall bar L = 600 mm
wall fastening adjustable to 3 spray patterns volume, booster, linear with cleaning system
with ridgeless adjustable shower holder vertically and horizontally adjustable
Logo flex hose 1/2 x 1/2 inch x 1600mm
FIZZ 3S hand shower with fixing kit with soap dish



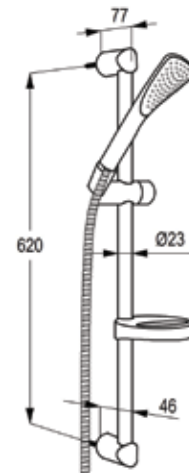
SHOWER SETS

SHOWER SETS



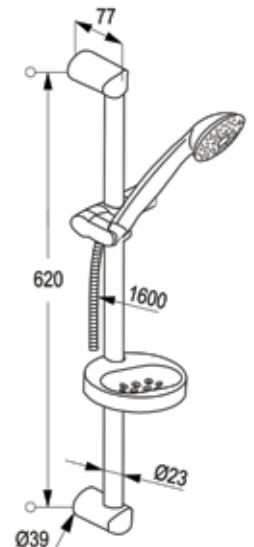
RAK6761005
1S Shower set L=600 mm

FIZZ
wall bar with floating slider and shower hose
shower hose G 1/2" x G 1/2" x 1600 mm
with screws and dowels
FIZZ 1S Hand-held shower
with quick lime deposit cleaning system
with soap dish



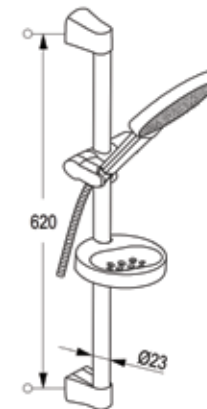
TRIO - 1S
RAK6013105
1S Shower set L=600mm

wall bar with slider horizontally and vertically adjustable
jet kind:rain shower
with soap dish
with fixing kit
1S hand-held shower
with quick lime deposit cleaning system
with Logoflex-hose, plastic coated with metal-effect
and conical nuts 1/2 x 1/2 inch x 1600 mm
with screws and dowels



RAK13007
1S Shower set L=600mm

PASSION
wall bar with horizontally and vertically adjustable slider
SIRENAFLEX shower hose 1/2 x 1/2 inch x 1600 mm
with conical nuts
PASSION hand shower 1 S
with cleaning system
angle adjustable in 5° stages (max. tilt angle 30°)
voluminous shower spray from 90 spray nozzles
with soap dish
with screws and dowels



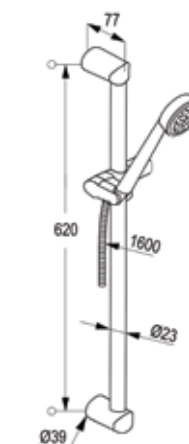
TRIO - 4S
RAK42005
4S Shower set L=600mm

wall bar with slider horizontally and vertically adjustable
jet kind: spray/misty/massage/spray & massage
with soap dish
with fixing kit
4S hand-held shower
with quick lime deposit cleaning system
with Logoflex-hose, plastic coated with metal-effect
and conical nuts 1/2 x 1/2 inch x 1600 mm
with screws and dowels



RAK6063005
1S Shower set L=600mm

PRIME
wall bar with slider horizontally and vertically adjustable
jet kind:rain shower
with fixing kit
1S hand-held shower
with quick lime deposit cleaning system
with Logoflex-hose, plastic coated with metal-effect
and conical nuts 1/2 x 1/2 inch x 1600 mm
with screws and dowels



RAK6064005
1S shower set L = 900 mm

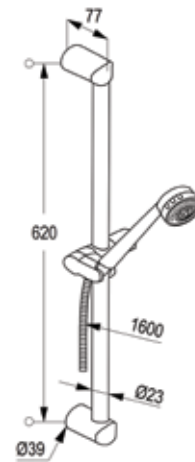




RAK6083005
3S Shower set L=600 mm

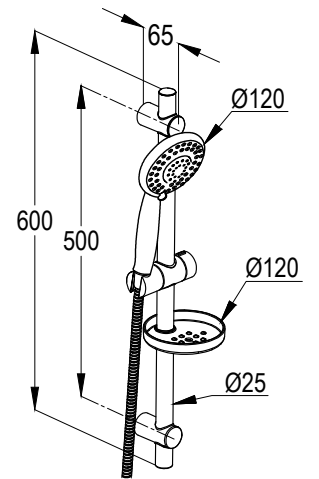
PRIME
wall bar with floating slider and shower hose
jet kind: shower spray, champagne rain/pulsating
jet shower hose G 1/2" x G 1/2" x 1600 mm
with screws and dowels
3S Hand-held shower
with quick lime deposit cleaning system

RAK6084005
3S shower set L = 900 mm



RAK62002
4S Shower set L=600 mm

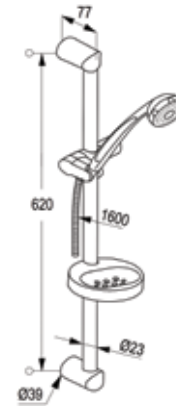
wall bar with slider horizontally and vertically adjustable
jet kind: spray/misty/massage/spray & massage
with soap dish
with fixing kit
4S hand-held shower
with quick lime deposit cleaning system
with stainless steel hose
and conical nuts 1/2 x 1/2 inch x 1500 mm
with screws and dowels



RAK6033105
3S Shower set L=600 mm

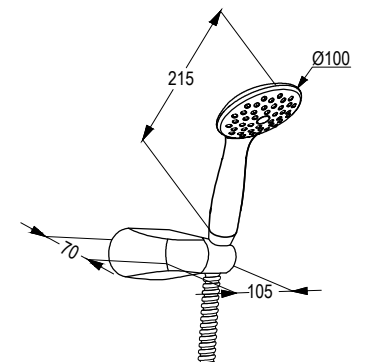
POLARIS & PROJECT
wall bar with floating slider and shower hose
jet kind: rain shower, soft spray, massage spray
shower hose G 1/2" x G 1/2" x 1600 mm
with screws and dowels
3S Hand-held shower
with quick lime deposit cleaning system
with soap dish

RAK6034105
3S shower set L = 900 mm

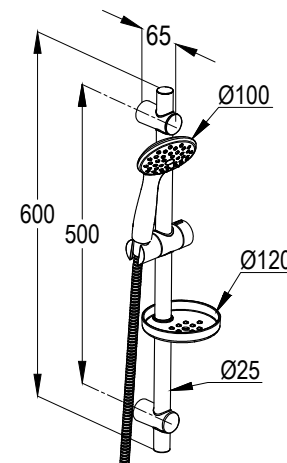


RAK62003

Bath tub set
jet kind: rain shower
shower connection G 1/2
shower hose 1/2" x 1/2" x 1500 mm
Adjustable holder
with screws and dowels

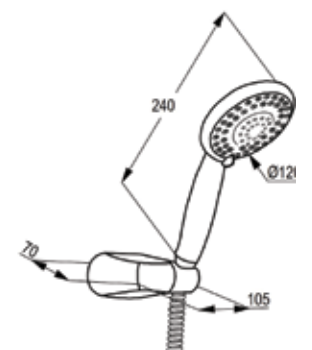


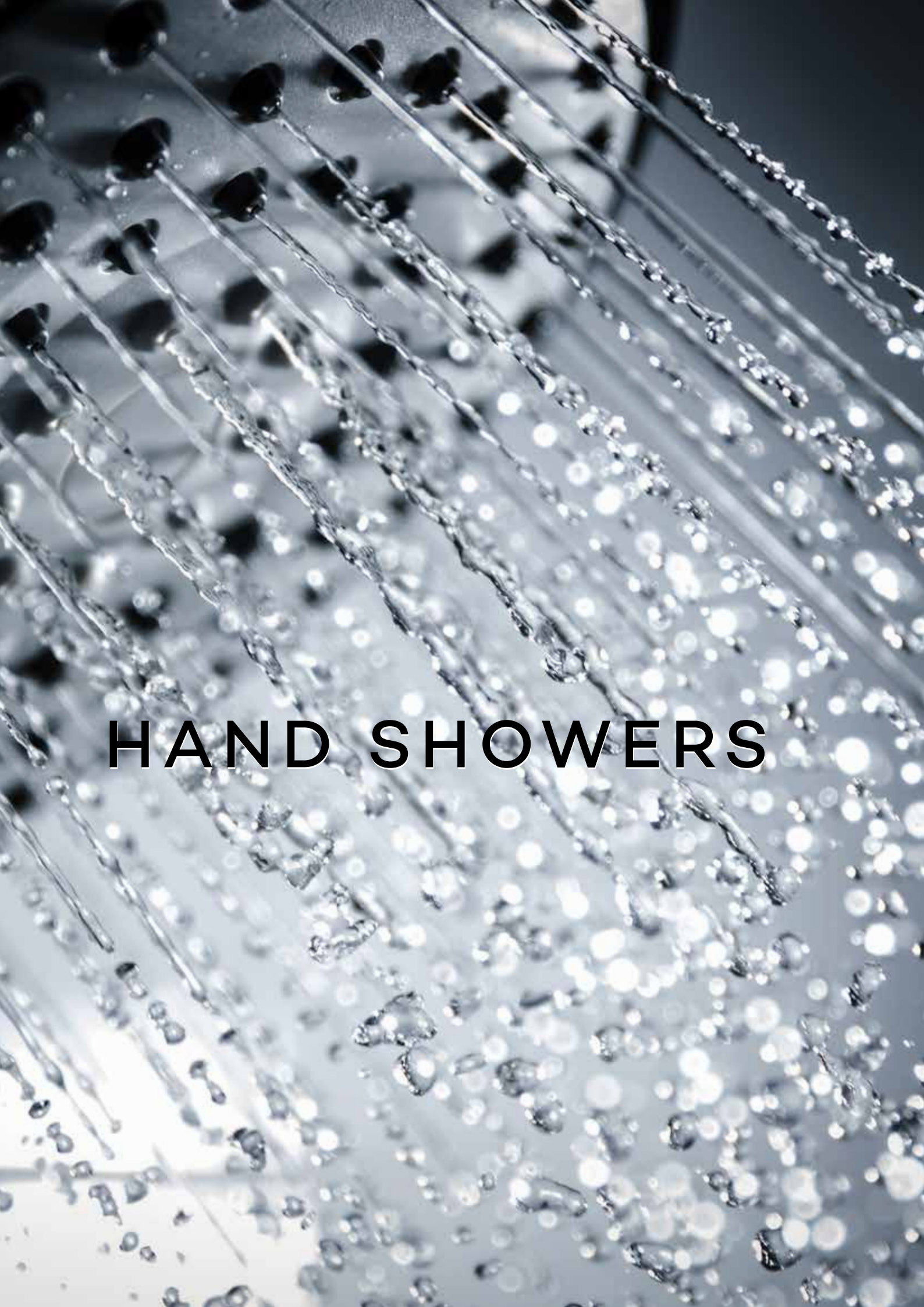
RAK62001
1S Shower set L=600 mm
wall bar with slider horizontally and vertically adjustable
jet kind: rain shower
with soap dish
with fixing kit
1S hand-held shower
with quick lime deposit cleaning system
with stainless steel hose,
and conical nuts 1/2 x 1/2 inch x 1500 mm
with screws and dowels



RAK62005

Bath tub set
jet kind: spray/misty/massage/spray & massage
shower connection G 1/2
shower hose 1/2" x 1/2" x 1500 mm
Adjustable holder
with screws and dowels





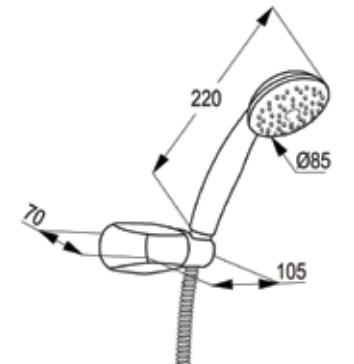
HAND SHOWERS

HAND SHOWERS



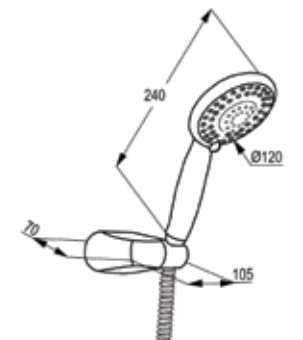
ECO 1S RAK7310025

Bath tub set
jet kind: rain shower
shower connection G 1/2
shower hose 1/2" x 1/2" x 1600 mm
Adjustable holder
with screws and dowels



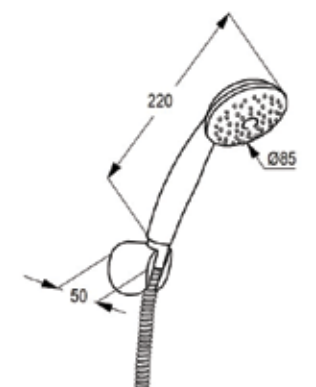
ECO 4S RAK40022

Bath tub set
jet kind: spray/misty/massage/spray & massage
shower connection G 1/2
shower hose 1/2" x 1/2" x 1600 mm
Adjustable holder
with screws and dowels



RAK7310015

Bath tub set
jet kind: rain shower
shower connection G 1/2
shower hose 1/2" x 1/2" x 1600 mm
fixed holder
with screws and dowels

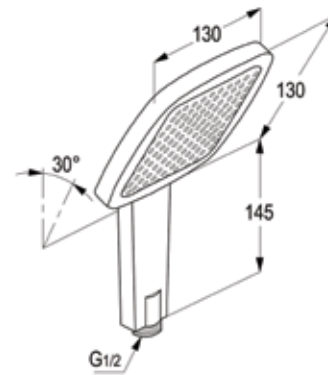


HAND HELD SHOWERS



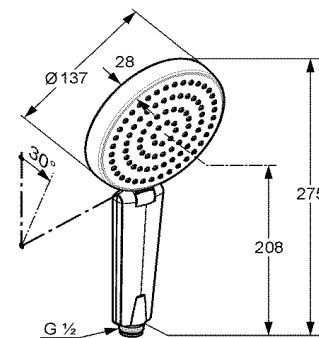
RAK14010

PROFILE - 1S Hand shower
flow class A
with cleaning system
with big size shower
spray 130 X130 mm
voluminous shower spray from 100
spray nozzles
flow rate 18.9 l/min at 3 bar
low-aerosol
connection 1/2 inch DN 15



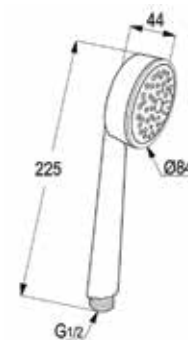
RAK13019

PASSION - 1S Hand shower with
cleaning system
with big size shower spray Ø137 mm
voluminous shower spray from
90 spray nozzles
flow rate 18.7 l/min at 3 bar
low-aerosol
connection 1/2 inch DN 15



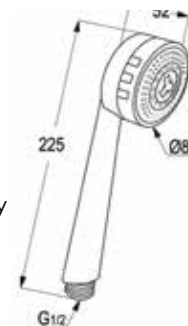
RAK6060005

1S Hand Shower DN 15
jet kind : rain shower



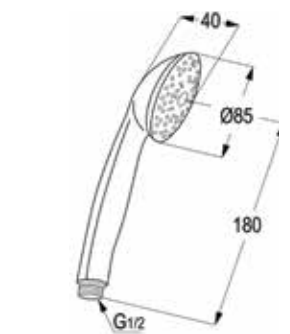
RAK6080005

3S Hand Shower DN 15
jet kind : rain shower/soft spray/massage spray



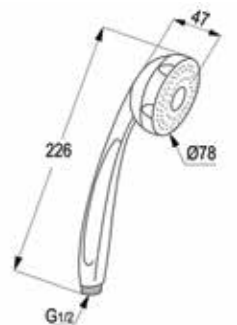
RAK7310005

1S Hand Shower DN 15
jet kind : rain shower



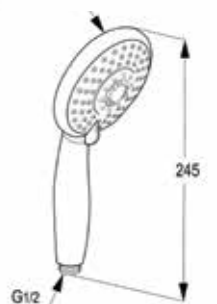
RAK6030005

3S Hand Shower DN 15
jet kind : rain shower/soft spray/
massage spray



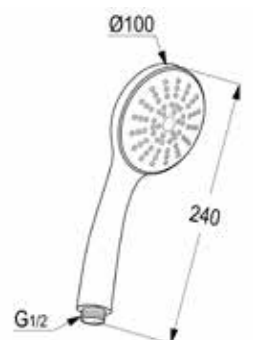
RAK40002

4S Hand Shower DN 15 Ø 120 mm
jet kind : spray/misty/massage/spray & massage



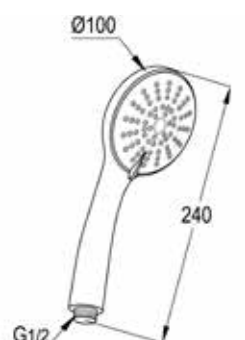
RAK40004

1S Hand Shower DN 15
Ø 100 mm
jet kind : Rain Shower



RAK40003

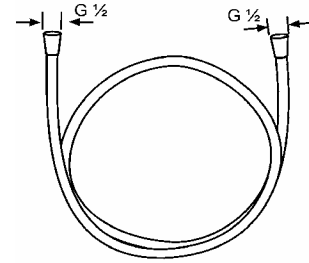
3S Hand held Shower
Easy open DN 15 Ø 100 mm
jet kind : spray/massage/ spray & massage





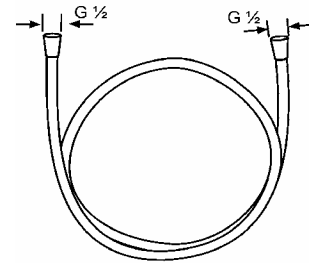
RAK6105605

Logo flex hose DN 15
plastic coated with metal-effect
with conical nuts 1/2 x 1/2 inch x
1600mm



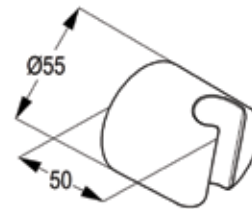
RAK22052

Bright Silver Hose
G1/2 x 1/2 inch x 1500mm



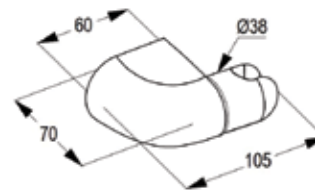
RAK6055105

Wall mount shower holder
with screws and dowels



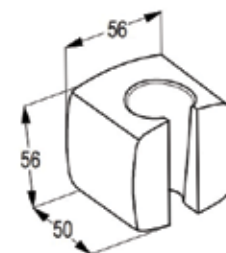
RAK22030

Wall mounted adjustable shower
holder
with screws and dowels



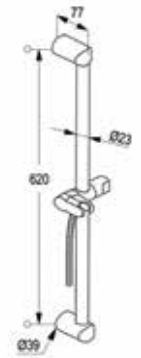
RAK14020

Wall mounted shower holder
with screws and dowels



RAK6061005

PRIME Wall bar L= 600 mm
with floating slider
shower hose G 1/2" x G 1/2" x 1600 mm
with screws and dowels



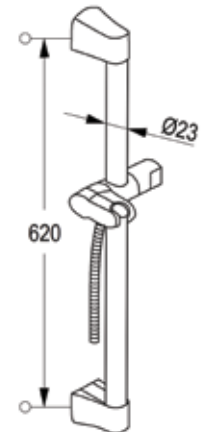
RAK6062005

PRIME Wall bar L= 900 mm



RAK13010

PASSION Wall bar L= 600 mm
with horizontally and vertically adjustable
slider
SIRENAFLEX shower hose 1/2 x 1/2" x 1600
mm
with screws and dowels



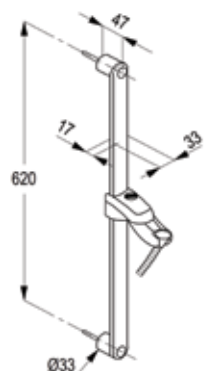
RAK13020

PASSION Wall bar L= 900 mm



RAK14007

PROFILE Wall bar L = 600 mm
with ridgeless adjustable shower
holder
with horizontally and vertically
adjustable slider with release button
SUPARAFLEX shower hose
1/2 x 1/2 inch x 1600 mm
with conical nuts
with screws and dowels





BATHROOM ACCESSORIES

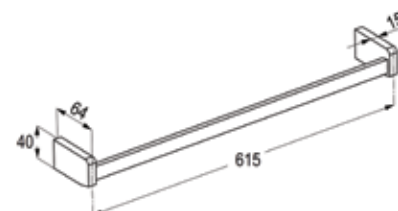
THE FINISHING TOUCH FOR INSPIRATIONAL BATHROOMS

High quality craftsmanship, top-grade materials and exceptional finish is the hallmark of CSAT GROUP range of finest accessories. Bathroom Accessories for shower, wash basin and bath tub are distinctive in their styles, shapes and are compatible with contemporary and traditional bathrooms. Moreover accessories from CSAT GROUP perfectly complement the interior décor and create inspirational bathrooms.



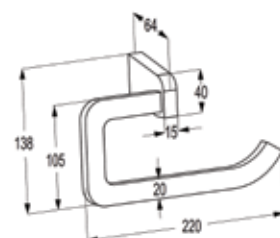
RAK26001

Single towel bar
wall fastening
with screws and dowels



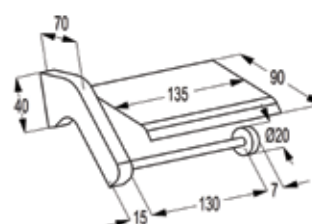
RAK26003

Towel Ring
wall fastening
with screws and dowels



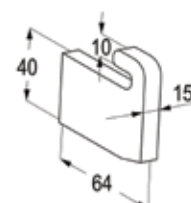
RAK26004

Paper holder
with adjustable guide plate
wall fastening
with screws and dowels



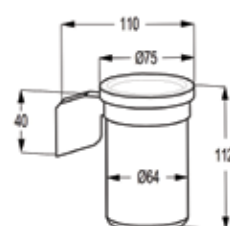
RAK26005

Robe Hook
wall fastening
with screws and dowels



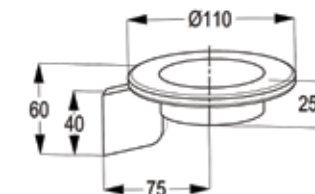
RAK26007

Tumbler Holder
wall fastening
with screws and dowels



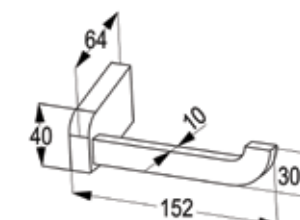
RAK26008

Soap Dish Glass
wall fastening
with screws and dowels
with a bowl of glass



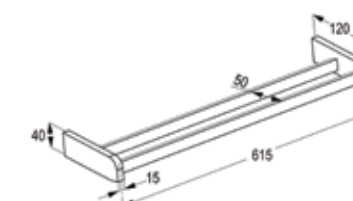
RAK26015

Paper Roll Holder
wall fastening
with screws and dowels



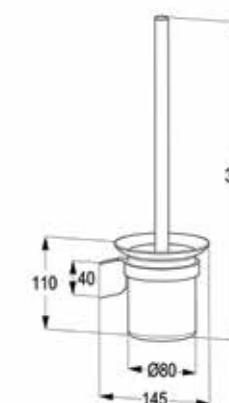
RAK26011

Double Towel Bar
wall fastening
with screws and dowels



RAK26032

Toilet Brush Holder
wall fastening
with screws and dowels
with container glass with brush



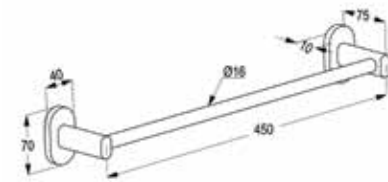
RAK26033

Wall Mounted Soap Dispenser,
glass - 175 ml
wall fastening
with screws and dowels

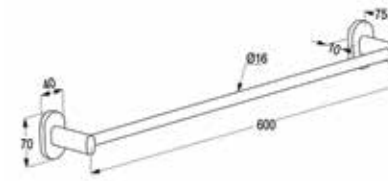




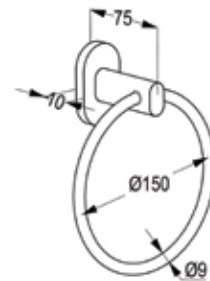
RAK23000
Single towel bar
wall fastening
with screws and dowels



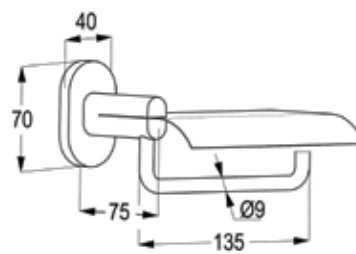
RAK23001
Single towel bar
wall fastening
with screws and dowels



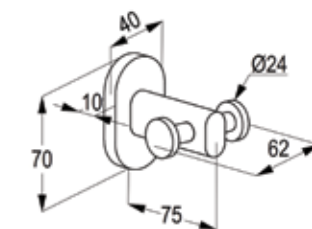
RAK23003
Towel ring
wall fastening
with screws and dowels



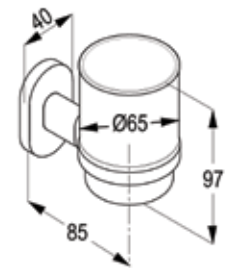
RAK23004
Paper holder
wall fastening
with screws and dowels
with fixed guide plate



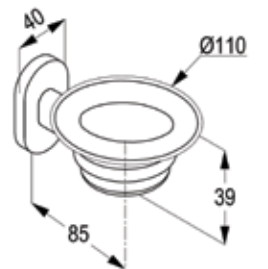
RAK23005
Robe hook
wall fastening
with screws and dowels



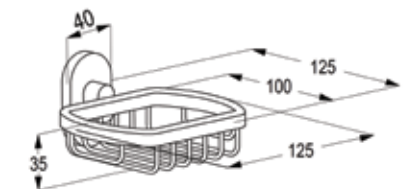
RAK23007
Brass tumbler holder, glass
wall fastening
with screws and dowels
with transparent glass



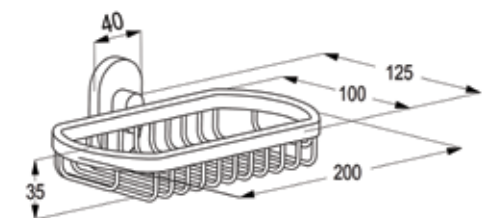
RAK23008
Brass soap dish, glass
wall fastening
with screws and dowels
with transparent glass



RAK23002
Soap basket
wall fastening
with screws and dowels

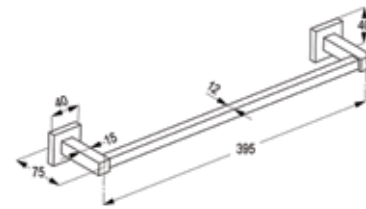


RAK23006
Soap /Sponge basket
wall fastening
with screws and dowels

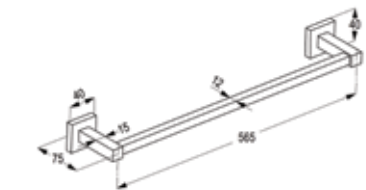




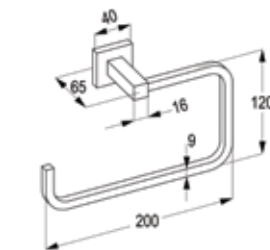
RAK24000
Single towel bar
wall fastening
with screws and dowels
with square bar



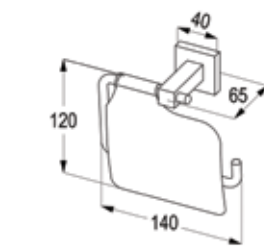
RAK24001
Single towel bar
wall fastening
with screws and dowels
with square bar



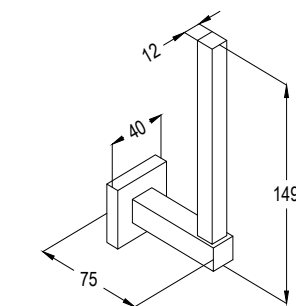
RAK24003
Towel ring
wall fastening
with screws and dowels



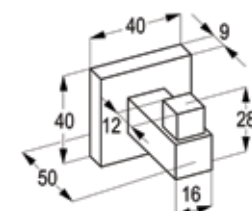
RAK24004
Paper holder
wall fastening
with screws and dowels



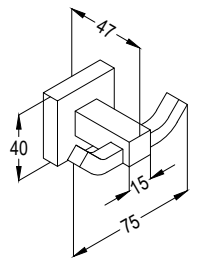
RAK24015
Extra Paper Roll holder
wall fastening
with screws and dowels



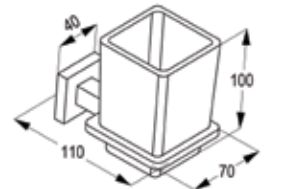
RAK24005
Robe hook
wall fastening
with screws and dowels



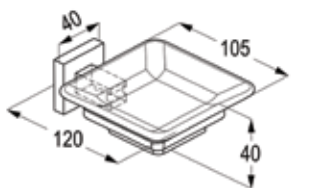
RAK24025
Double Robe hook
wall fastening
with screws and dowels



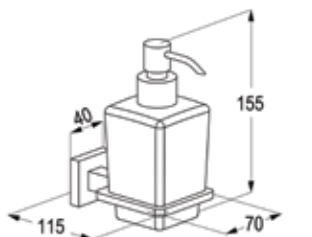
RAK24007
Tumbler holder glass
wall fastening
with screws and dowels



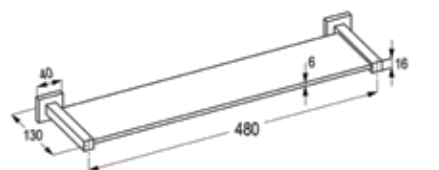
RAK24008
Soap dish glass
wall fastening
with screws and dowels
with a bowl of glass



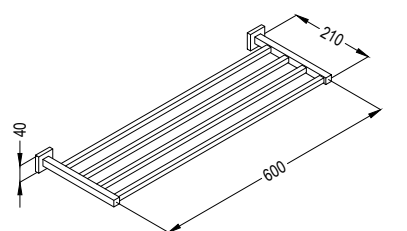
RAK24033
Wall mounted soap dispenser,
glass - 225 ml
wall fastening
with screws and dowels



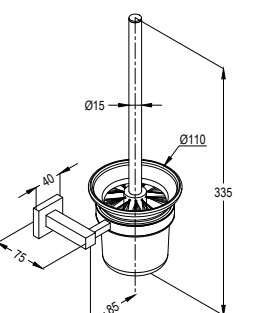
RAK24013
Glass shelf
wall fastening
with screws and dowels



RAK24010
Brass Towel shelf
wall fastening
with screws and dowels

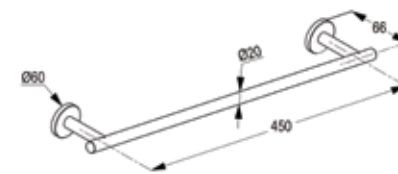


RAK24032
Toilet brush holder
wall fastening
with screws and dowels

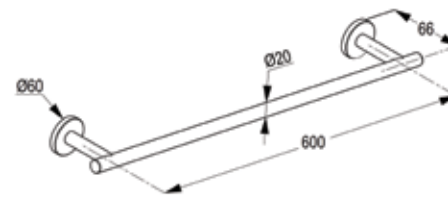




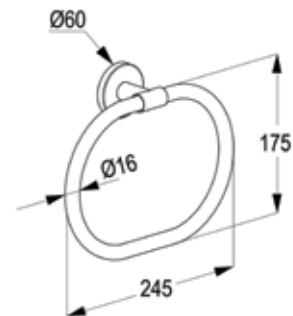
RAK21000
Single towel bar
wall fastening
with screws and dowels



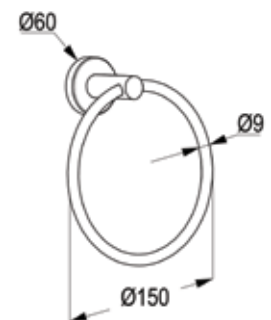
RAK21001
Single towel bar
wall fastening
with screws and dowels



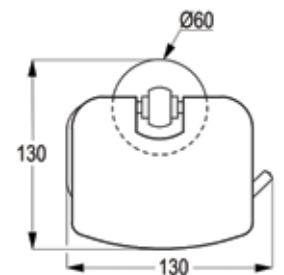
RAK21003
Towel ring
wall fastening
with screws and dowels



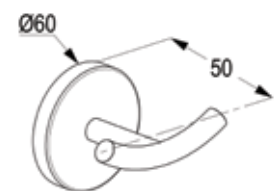
RAK21031
Towel ring
wall fastening
with screws and dowels



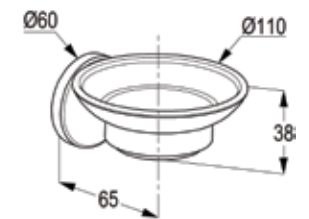
RAK21004
Paper holder
wall fastening
with screws and dowels
with adjustable guide plate



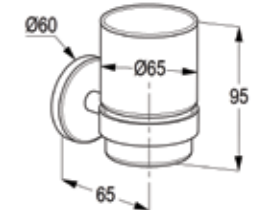
RAK21005
Robe hook
wall fastening
with screws and dowels



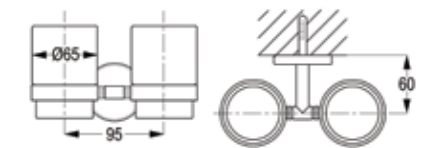
RAK21008
Soap dish, glass
wall fastening
with screws and dowels
with a bowl of crystal glass



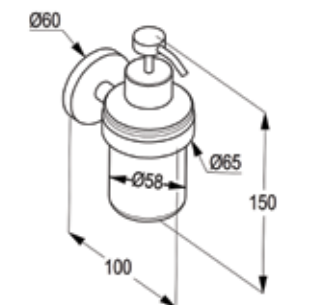
RAK21007
Tumbler holder, glass
wall fastening
with screws and dowels



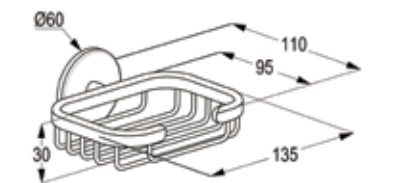
RAK21014
Double tumbler holder, glass
wall fastening
with screws and dowels



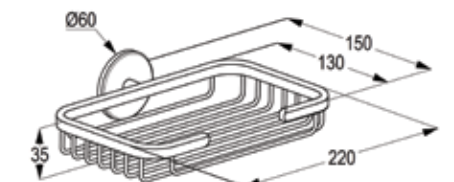
RAK21033
Wall mounted soap dispenser,
glass - 200 ml
wall fastening
with screws and dowels



RAK21002
Soap basket
wall fastening
with screws and dowels

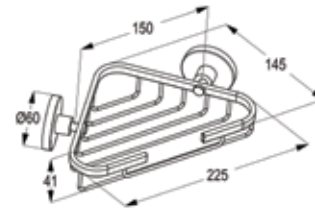


RAK21006
Soap / sponge basket
wall fastening
with screws and dowels

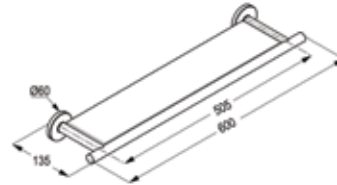




RAK21034
Soap basket corner
wall fastening
with screws and dowels



RAK21013
Glass shelf
wall fastening
with screws and dowels



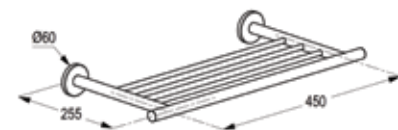
RAK21012
Double towel bar adjustable
with adjustable two arm
wall fastening
with screws and dowels



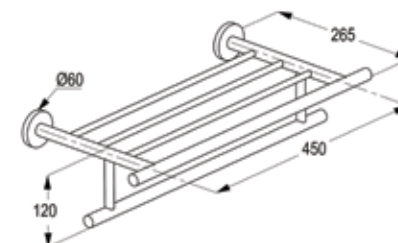
RAK21011
Double towel bar
wall fastening
with screws and dowels



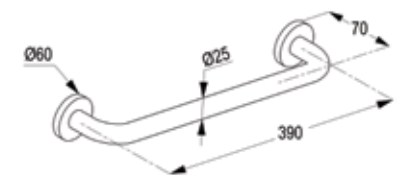
RAK21010
Towel shelf
wall fastening
with screws and dowels



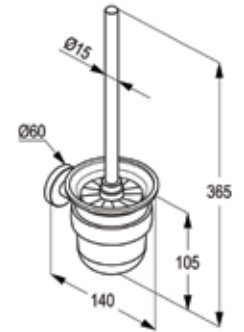
RAK21020
Towel shelf with towel bar
wall fastening
with screws and dowels



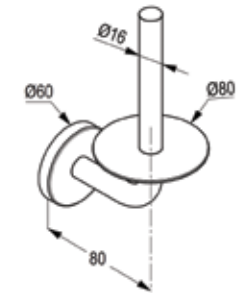
RAK21009
Bath grab bar
wall fastening
with screws and dowels



RAK21032
Toilet brush holder, glass
wall fastening
with screws and dowels
with container glass with brush



RAK21015
Extra paper roll holder
wall fastening
with screws and dowels



RAK21021
CALIBER Bathroom
accessories, 6 piece set



RAK21022
PROJECT Bathroom
accessories, 6 piece set



RAK27021
PEARL Bathroom
accessories, 5 piece set



RAK32002

Brass Shattaf with supreme hose & wall bracket
Brass Shattaf with Aerated flow
Connection 1/2 inch
with supreme hose-G1/2 x G 1/2 x 1200mm
with wall bracket
with dirt catching sieve



RAK32007

ABS chrome Shattaf with silver hose & wall bracket
Connection 1/2 inch
silver hose G1/2 x G 1/2 x 1200mm
with wall bracket
with dirt catching sieve



RAK32008

ABS Black Shattaf with black hose & wall bracket
Connection 1/2 inch
black hose G1/2 x G 1/2 x 1200mm
with wall bracket
with dirt catching sieve



RAK32009

ABS White Shattaf with silver hose & wall bracket
Connection 1/2 inch
Silver hose G1/2 x G 1/2 x 1200mm
with wall bracket
with dirt catching sieve



RAK3200701

ABS chrome Shattaf with
Ceramic Shut-off valve
Connection 1/2 inch
Silver hose G1/2 x G 1/2 x 1200mm
with dirt catching sieve



RAK3200702

ABS chrome Shattaf with
Concealed single lever mixer,
pre installation kit DN15
Connection 1/2 inch
Silver hose G1/2 x G 1/2 x 1200mm
with wall bracket
with dirt catching sieve



RAK3200703

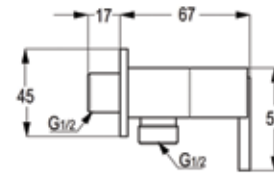
ABS chrome Shattaf with
Single lever shattaf mixer DN 15
ceramic cartridge-K35
flow class B
shower outlet G 1/2"
protected against back flow
S- unions 1/2 X 3/4 inch
European standard- EN 817





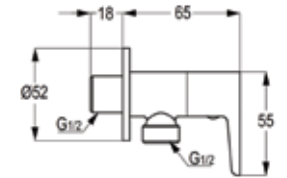
RAK14013

Brass angle valve DN 15
1/4 Turn-cp 1/2" x 1/2"
ceramic disc fitting
working pressure 6 bar maximum
provided with hot and cold button
rosette brass with chrome plating



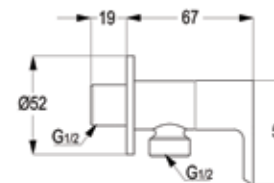
RAK10018

Brass angle valve DN 15
1/4 Turn-cp 1/2" x 1/2"
ceramic disc fitting
working pressure 6 bar maximum
provided with hot and cold button
rosette brass with chrome plating



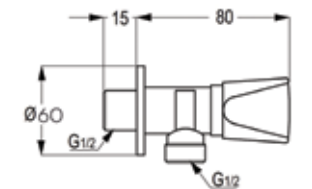
RAK13013

Brass angle valve DN 15
1/4 Turn-cp 1/2" x 1/2"
ceramic disc fitting
working pressure 6 bar maximum
provided with hot and cold button
rosette brass with chrome plating



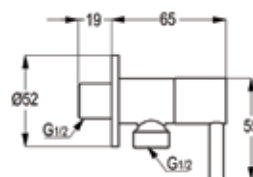
RAK33002-01

Brass angle valve DN 15
1/4 Turn-cp 1/2" x 1/2"
ceramic disc fitting
working pressure 6 bar maximum
provided with hot and cold button
S.S rosette



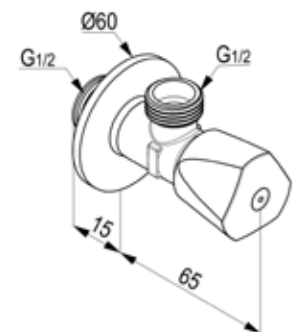
RAK12018

Brass angle valve DN 15
1/4 Turn-cp 1/2" x 1/2"
ceramic disc fitting
working pressure 6 bar maximum
provided with hot and cold button
rosette brass with chrome plating



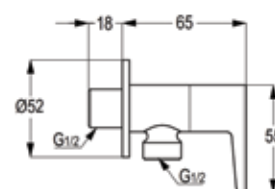
RAK33001

Brass angle valve DN 15
1/4 Turn-cp 1/2" x 1/2"
ceramic disc fitting
ABS handle
working pressure 6 bar maximum
provided with hot and cold button
S.S rosette



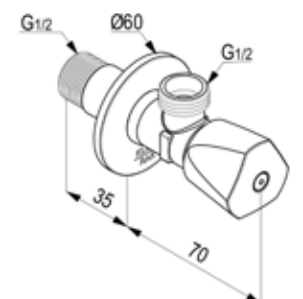
RAK11014

Brass angle valve DN 15
1/4 Turn-cp 1/2" x 1/2"
ceramic disc fitting
working pressure 6 bar maximum
provided with hot and cold button
rosette brass with chrome plating



RAK33003

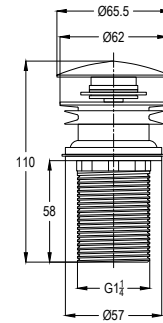
Brass angle valve DN 15
1/4 Turn-cp 1/2" x 1/2"
ceramic disc fitting
ABS handle
working pressure 6 bar maximum
provided with hot and cold button
S.S rosette





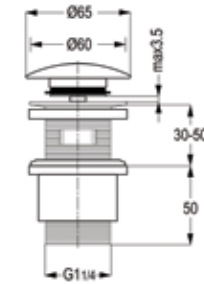
RAK22007

Click clack waste fitting with
Over flow Hole
Click Clack Waste Fitting 1 1/4"



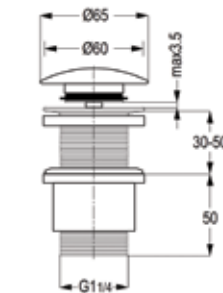
RAK22007UK

Click clack waste fitting with
Over flow Hole
Click Clack Waste Fitting 1 1/4"



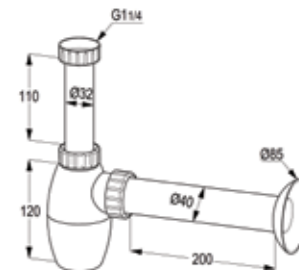
RAK22025UK

Click clack waste fitting
without Over flow hole
Click Clack Waste 1 1/4"



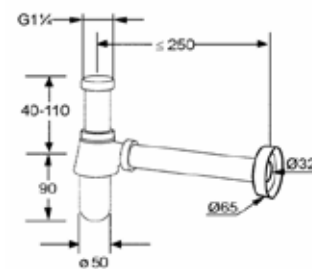
RAK22016

PVC bottle trap 1 1/4"
Inlet pipe- G 1 1/4"
with outlet tube Ø40 x 200mm
with inlet tube Ø32 x 150mm
with wall flange



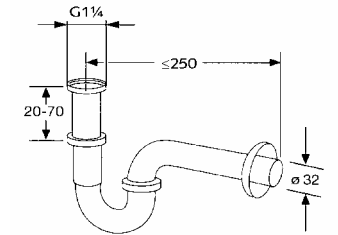
RAK1010505

Brass chrome bottle trap 1 1/4"
G 1 1/4" x 32 mm
with outlet tube 32 x 200 mm
with wall flange



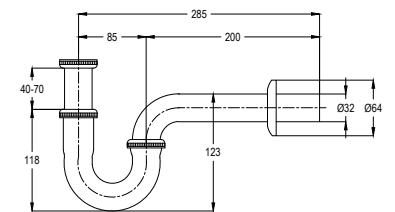
RAK1025005

Ideal P-Trap G 1 1/4" x 32 mm
G 1 1/4" x 32 mm
adjustable drain pipe up to 70 mm
with outlet bend 32 x 220 mm
with wall flange



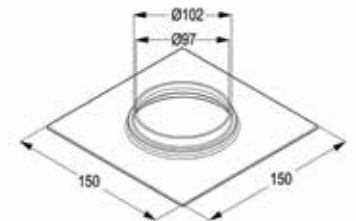
RAK1026005

Brass P-Trap G1. 1/4 x 32mm
for basin



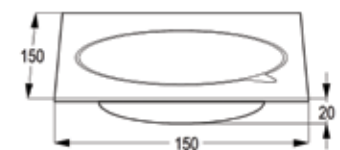
RAK22023

Brass chrome floor drain
Floor drain (150x150mm)
with heavy steel mesh



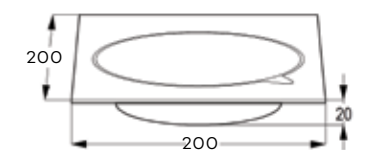
RAK22029

Stainless steel floor drain
Floor drain (150x150mm)
With heavy steel mesh



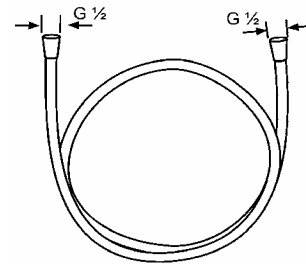
RAK22024

Stainless steel floor drain
Floor drain (200x200mm)
With heavy steel mesh

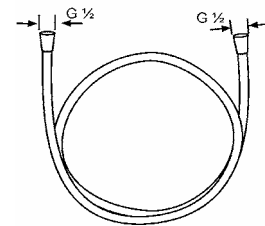




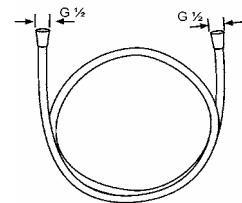
RAK22018
AGGRAF HOSE-
G1/2"x1/2"x1200mm



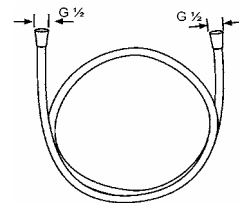
RAK22019
CHEQUERED HOSE
G1/2"x1/2"x1200mm



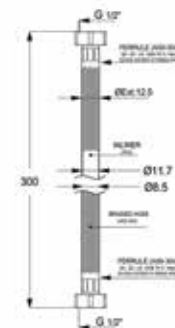
RAK22039
Supreme hose with chromolux look
G 1/2" x 1/2" x 1200 mm



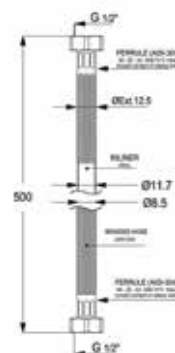
RAK22048
Logo Flex hose
G 1/2" x 1/2" x 1200 mm



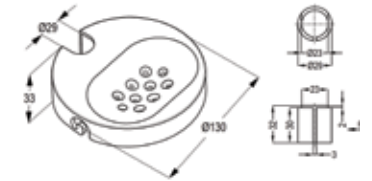
RAK22028
Flex feeding hose
G 1/2" x 1/2" x 300 mm



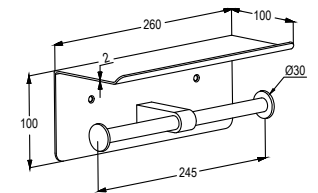
RAK22008
Flex feeding hose
G 1/2" x 1/2" x 500 mm



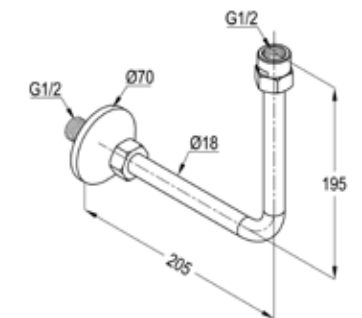
RAK6210121
Acrylic soap dish
(for wall bar)



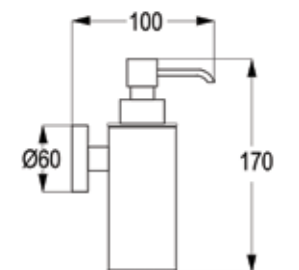
RAK22059
Double tissue roll holder
wall fastening
with screws and dowels



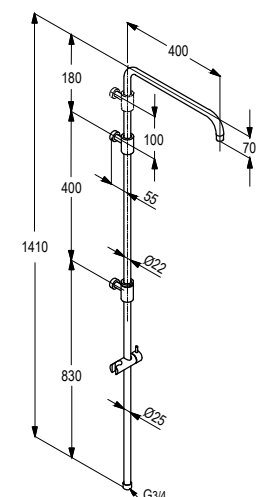
RAK22069
Brass chrome plated L-bend Pipe



RAK22009
Wall mounted soap dispenser,
brass - 150 ml
wall fastening
with screws and dowels



RAK22042
Brass Exposed shower Pipe



CERTIFICATE

CSAT GROUP operates under international certifications that demonstrate its dedication to manufacturing quality products

DVGW CERTIFICATE GmbH is the largest gas and water industry certification body in Europe, covering all the certification procedures equired in the gas and water sectors. The main objective of all certification work is to ensure that there are no safety, hygiene or environmental objections to the products and companies certified. The DVGW CERT certification system ensures proven quality and safety on the basis of the DVGW standards and other recognized technical standards and test specifications.

ISO 9001:2015 is the international standard that specifies requirements for a quality management system (QMS). Organizations use the standard to demonstrate the ability to consistently provide products and services that meet customer and regulatory requirements. ISO 9001:2015 is based on the plan-do-check-act methodology and provides a process-oriented approach to documenting and reviewing the structure, responsibilities, and procedures required to achieve effective quality management.

SASO Quality Mark is an important means to guide consumers to products that conform to Saudi Arabian standards. Through the Quality Mark, products gain customers' satisfaction and trust.

Emirates Green Building Council (EmiratesGBC) was formed in 2006, with the goal of advancing green building principles for protecting the environment and ensuring sustainability in the United Arab Emirates.

SONCAP The Standards Organisation of Nigeria (**SON**) is the apex standardization body in Nigeria.

WRAS is a subscription membership company limited by guarantee and was incorporated on 4 August 2008. The purpose of WRAS is to contribute to the protection of public health by preventing contamination of public water supplies and encouraging the efficient use of water by promoting and facilitating compliance with the Water Supply (Water Fittings) Regulations and Byelaws.

Emirates Authority for Standardization and Metrology (ESMA) was established as the sole Standardization Body in the UAE. The body issues conformity certificate for Water Fixtures Products complying with the UAE Assessment Scheme (ECAS) according to the technical requirements of the cabinet resolution No. 43 for the year 2014.

ADQCC Abu Dhabi Quality and Conformity Council is an Abu Dhabi government entity established in accordance with Local Law No. (3) of 2009 to raise the quality of Abu Dhabi's exports and products traded locally. QCC consists of a council of regulators and industry with a mandate to ensure provision of quality infrastructure in line with global standards.

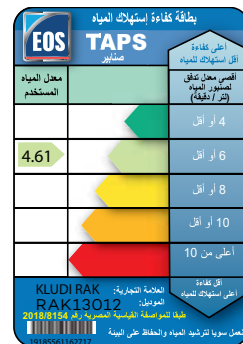
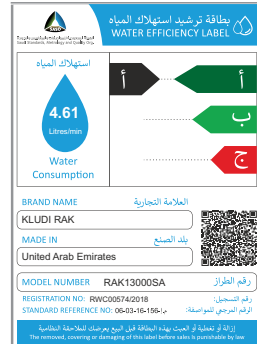
Supplier Certificate from UAE Ministry of Infrastructure Development

CERTIFICATE






WATER EFFICIENCY COMPLIANCE

CSAT GROUP's products have been issued with the Water Efficiency Label from SASO Water Efficiency Labeling Programme of Saudi Arabia, Emirates Authority for Standardization and Metrology (ESMA) of the UAE and Egyptian Organization For Standardization & Quality (EOS) of Egypt. CSAT GROUP is amongst the first companies to have 5-star ratings from ESMA and A-grade ratings from SASO for its products.







ADDITIONAL PRODUCT
REFERENCE CODES

FOR BASIN/ BIDET/ SINK MIXERS	
RAKXXXXX	3/8" HOSE CONNECTION - FLOW RATE 15 ≤ LTR/MIN
RAKXXXXX-01	1/2" HOSE CONNECTION - FLOW RATE 6 LTR/MIN
RAKXXXXX-03	1/2" HOSE CONNECTION - FLOW RATE 15 ≤ LTR/MIN
RAKXXXXX-04	3/8" HOSE CONNECTION - FLOW RATE 6 LTR/MIN
RAKXXXXX-31	1/2" HOSE CONNECTION - FLOW RATE 1.9 LTR/MIN
RAKXXXXX-32	1/2" HOSE CONNECTION - FLOW RATE 3 LTR/MIN
RAKXXXXX-09	1/2" HOSE CONNECTION - FLOW RATE 3.8 LTR/MIN
RAKXXXXX-33	1/2" HOSE CONNECTION - FLOW RATE 5 LTR/MIN
RAKXXXXX-37	1/2" HOSE CONNECTION - FLOW RATE 0.6 LTR/MIN
FOR SHOWER MIXERS HAND SHOWER & OVERHEAD SHOWER	
RAKXXXXX	FLOW RATE 15 ≥ LTR/MIN
RAKXXXXX-21	FLOW RATE 9 LTR/MIN
RAKXXXXX-22	FLOW RATE 7 LTR/MIN

FOR BATH MIXER		
RAKXXXXX	FLOW RATE 22 ≥ LTR/MIN	
RAKXXXXX-86	FLOW RATE 9 LTR/MIN	
RAKXXXXX-87	FLOW RATE 8 LTR/MIN	
RAKXXXXX-88	FLOW RATE 6 LTR/MIN	
COUNTRY CODES		
RAKXXXXXEG	EGYPT STANDARD	
RAKXXXXXAD	ADQCC STANDARD	
RAKXXXXXSA	SASO STANDARD	
AVAILABLE FINISHES		
RAKXXXXX.GD1	GLOSSY GOLD	
RAKXXXXX.RG1	GLOSSY ROSE GOLD	
RAKXXXXX.BK1	GLOSSY BLACK	

CREATE YOUR PRODUCT CODE

PRODUCT CODE	IMAGE	FINISH	FLOW RATE
RAK16000-09		CHROME	3.8LTR/MIN
RAK16000-33.GD1		GOLD	5 LTR/MIN
RAK16000-31.RD1		ROSE GOLD	1.9 LTR/MIN
RAK16000-09.BK1		BLACK	3.8 LTR/MIN

CARE INSTRUCTIONS

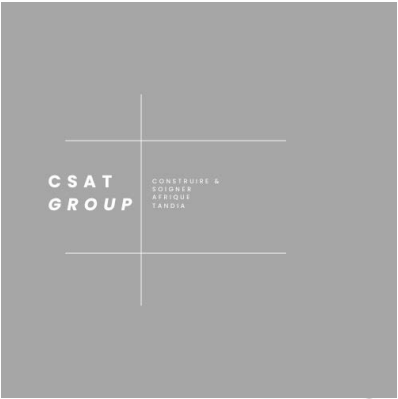
Dear Customer,
Congratulations on choosing the best bathroom fittings for your needs!
In order to ensure the long life of your CSAT GROUP products, please follow the enlisted care and cleaning instructions.

- Clean the surface to prevent accumulation of dirt and lime scale
- For daily cleaning use neutral cleaners and water
- For removing strong lime scale use cleaners with citric acid base
- Use cleaning agents specially developed for fittings
- Cleaning sprays should first be sprayed on a soft cloth and then the cloth should be used to clean the fittings. Do not spray them directly on the surface of the fitting.
- The amount of cleaning agent used should be just sufficient to remove the dirt and lime scale. Do not use excessive quantities. Also, do not let the cleaning agent stay on the surface for longer time than necessary.
- After using the cleaning agent, rinse the fitting with sufficient water to remove it and then polish with a soft cloth.

The chrome plating on the surface of the fitting is a result of a lot of chemical reactions. Strong cleaners and bleach can alter the effects of these reactions and cause significant damage to the surface and void the warranty. In any case do not use any of the following to clean the fittings:

- Abrasive cleaning materials, pads, scourers etc.
- Cleaning agents with volatile acids like hydrochloric or acetic acid
- Scouring powders or abrasive cleaning fluids
- Cleaning agents containing bleach such as Clorox.

Cleaning the fittings after each use helps retain their value!



WE STAND FOR WATER SAVING



**CSAT
GROUP**

CONSTRUIRE &
SOIGNER
AFRIQUE
TANDIA

Résidence la Perle, Bloc A, Apt

801, Camayenne commune de Dixinn.
Tel : 00 224 625766776

Email : ceo@csatafrique.org

www.csatafrique.org